



DIGITAL DATA DOCUMENTATION

WAIMAKARIRI DISTRICT COUNCIL AND ENVIRONMENT CANTERBURY

WAIMAKARIRI LIDAR SURVEY 2005

VOLUME 210110305NOB

Summary Data Description

Waimakariri District Council, together with Environment Canterbury require detailed topographic terrain data covering various project areas. To this end, AAMHatch acquired Airborne Laser Scanning data from a fixed wing aircraft between July 21st and 24th 2005. This volume is a re-supply of the entire data set with corrections specified by the client, and contains:

- Thinned ground strikes in space delimited ASCII format,
- First return laser strikes with intensity in space delimited ASCII format,
- Last return laser strikes with intensity in space delimited ASCII format,
- 2m DTM Grids in ESRI ASCII Grid format,
- 0.5m interval cartographic contours in ESRI Shapefile format, and
- Derived geoid model in DXF format.

CONTENTS	Page Nos.
-----------------	------------------

1. Project Report.....	2
2. Data Installation.....	5
3. Additional Services	7
4. Metadata.....	8
5. Conditions Of Supply	10
6. Validation Plot.....	11
7. Files Supplied	13

1. PROJECT REPORT

Acquisition: Airborne Laser Scanning (ALS) data was acquired from a fixed wing aircraft between July 21st and 24th 2005. Delays in acquiring the data were due to low cloud and rain over the project area.

Ground Support: GPS base station support was provided by the client without incident. The ground check points acquired by the client allowed an assessment of the accuracy of the ALS data.

Data Processing: Reduction of the ALS data proceeded without any significant problems. Laser strikes were classified into ground and non-ground points using a single algorithm across the project area. Manual checking and editing of the data classification further improved the quality of the terrain model. Ground strikes were thinned to remove superfluous points not contributing to the terrain definition.

Ground points are defined as: Laser strikes representing the terrain surface. This **does not** include vegetation, buildings, bridges, water and other above ground features. The ground points have been thinned to remove superfluous points not contributing to the surface model.

Non-ground points are defined as: Laser strikes representing features that are above the terrain surface. This **does not** include ground features. Non-ground **does** include vegetation, buildings, bridges, and other above ground features. Water may also be included as non-ground.

Laser strikes were separated into first and last pulse returns and provided with intensity values.

Geoid Model : A local geoid model was created covering the Waimakariri project area. The geoid separation between the ellipsoidal and local orthometric heights supplied was computed with a resulting N value. The geoid model was then derived using the N value separation and compared to the International geoid model EGM96 as used by the Concord Conversion program. The EGM96 geoid model is a generalized geoid model with minor variations existing with local project areas.

The EGM96 model has a gentle north-east/south-west slope. This is what we expected to see, as EGM96 is an estimated geoid model with long wavelength corrections. The local geoid is in some contrast, with a steeper north-west/south-east slope. There are also some areas of flattening and a north/south valley running through the project area.

The AAMHatch local geoid model required further extrapolation to cover the outer edges of the project area. Figure 1. displays an image showing the extrapolation, which maintains the general geoid shape

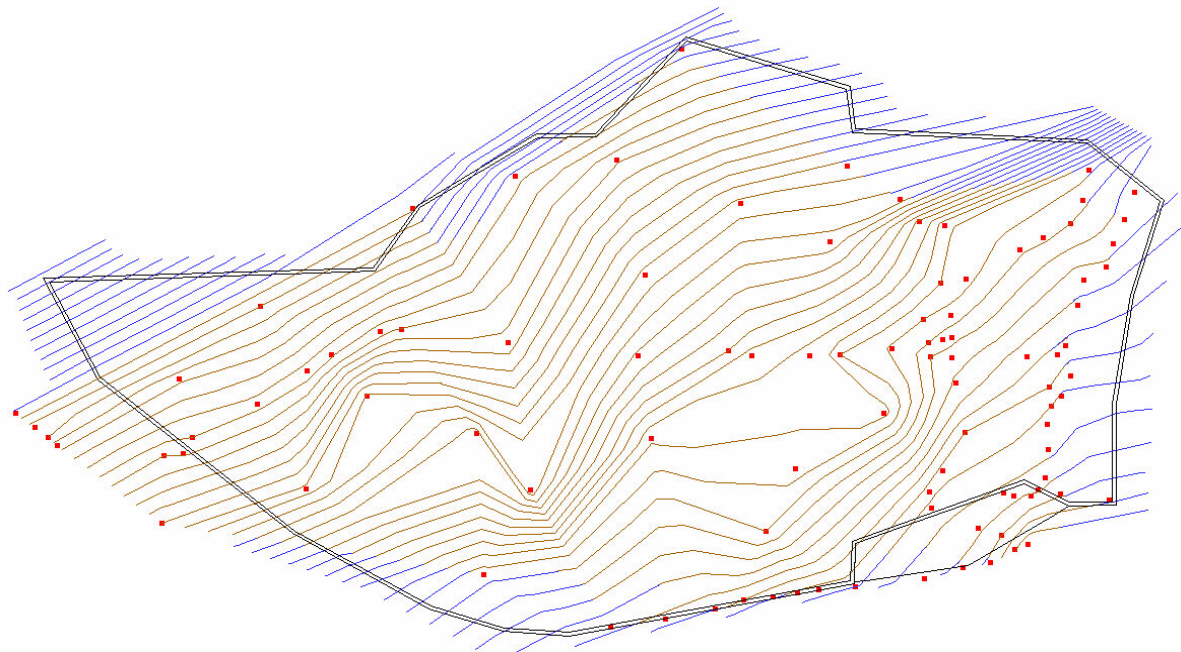


Figure 1. AAMHatch's extrapolated local geoid model with 0.05m contour intervals. The brown contours define the original local geoid model, and the blue contours define the additional extrapolated extents of the final model.

The AAMHatch extrapolated local geoid model has been used to adjust all the data provided in this project. A digital version of the final geoid model will be provided to Waimakariri District Council and Environment Canterbury to archive with the final data delivered.

Data Grids: Data was processed into 4km x 4km ESRI ASCII grids with a 2m pixel resolution. Grids were produced using the average height of the unthinned ground points within a 2m cell. Gaps caused by removal of buildings, vegetation and water within the project area were interpolated across. Areas outside of the project area were given a null value.

Contours:- Cartographic contours were generated at 0.5m contour intervals and manually inspected to remove cartographic noise. Due to unique terrain features across the project area, isolated noise may exist within the contour data. AAMHatch has provided a dataset that defines the surface accurately while trying to derive contours of cartographic appearance. In areas where the ALS point density is reduced the contours will appear more irregular in shape. Contours within the floodplain areas show isolated pockets of noise. Any further refining to remove this noise could degrade the over all contour accuracy.

Data Presentation: The data provided on this volume has been supplied in accordance with a specification agreed with the primary client. Subsequent users experiencing difficulties in handling the data should please contact AAMHatch to arrange a more appropriate data presentation.

Further Issues: There are three areas on the northern boundary where no ALS data was available. The tiles covering these areas are; W57762456, W57762476, W57802468. Figure 2. shows the extent of the missing data. This is outlined by the red polygons.



Figure 2. Extents of missing ALS data.

2. DATA INSTALLATION

Data format : Space delimited ASCII/DXF
 Number & type of media : 2 X 4.5GB DVD
 Number of files on media : 1785, viz. 1764 data files, 20 project files and
 README.PDF
 Data formatted on : 25.07.2006
 Disk volume : 210110305NOB
 AAMHatch Job Manager : *Glen Eaton +61 (08) 9228 6800*

README FILE

This document (README.PDF) is provided as an Acrobat file in this volume.
 To open the file, double click on the PDF file to activate Acrobat Reader Software.

Adobe Acrobat Reader may be downloaded from:

<http://www.adobe.com/products/acrobat/readstep2.html>

LOADING NOTES

Data may be copied using a file copy utility such as Windows Explorer or similar.

REVISION HISTORY

Volumes previously issued under this project include:

Volume	Date	Data Title	Contents
210110301NOB	31.08.05	Waimakariri Lidar Survey 2005	Waimakariri Lidar Survey Priority Area
210110302NOB	21.10.05	Waimakariri Lidar Survey 2005	Waimakariri Lidar Survey thinned ground, first pulse, last pulse returns, geoid model
210110303NOB	28.10.05	Waimakariri Lidar Survey 2005	Waimakariri Lidar Survey ASCII Grids, Cartographic Contours
210110304NOB	13.03.06	Waimakariri Lidar Survey 2005	Resupply 1: Waimakariri Lidar Survey thinned ground, first pulse, last pulse returns, geoid model

FILE SIZES AND NAMES

Data is provided in tiles 4km by 4km to the following filenaming convention:

eg. W57562480.grd W - Project abbreviation
 5756 - Coordinate northing (in thousands) of south west tile corner
 2480 - Coordinate easting (in thousands) of south west tile corner
 .grd - Thinned ground points in space delimited ASCII format
 .fst - First pulse returns in space delimited ASCII format
 .lst - Last pulse returns in space delimited ASCII format
 .asc - 2m DTM in ESRI ASCII grid format
 .shp - ESRI shapefile component
 .shx - ESRI shapefile component
 .sbx - ESRI shapefile component
 .sbn - ESRI shapefile component
 .dbf - ESRI shapefile component
 .prj - ESRI projection file
 .dxf - Drawing file

Note: First and Last pulse data has been provided in a 2km by 2km tile layout.

A list of the files contained on this volume is provided in Section 7.

SAMPLE LISTING

Space delimited ASCII Format Sample

```
      E      N      RL
2483966.470 5759508.660 0.780
2483969.500 5759507.980 0.700
2483965.460 5759500.280 1.170
2483965.460 5759497.610 1.010
2483963.850 5759497.930 1.180
etc.
```

ESRI ASCII Grid

```
ncols      2000
nrows      2000
xllcorner  2456000
yllcorner  5760000
cellsize   2
NODATA_value -9999
149.5112 149.5468 149.5365 149.4618 149.5223 149.4686 149.3473 149.4685 149.4826
149.4904 149.4486 149.2986 149.2232 149.1731 149.202 149.221 149.1943 149.232
149.1489 149.1121 149.1293 149.1113 149.0872 148.99 149.0723 148.9258 148.9676
etc.
```


3. ADDITIONAL SERVICES

AAMHatch can perform the following additional services on the data contained on this volume if required:

- Change horizontal datum : to NZTM or other local grid
- Improve data classification : by tailoring parameters to suit regional variations
- Further classification : Assist building identification by further classifying non-ground strikes
- Data subset : by dividing the data into different tiles or polygons
- Data presentation : by creating contours, profiles, perspectives, flythroughs, colour-coded height plots etc.
- Ground truthing : by comparing the ALS terrain model with extra independent height data
- Intensity Image : Greyscale image created from laser's intensity returns. (sample below)



4. METADATA

DATA CHARACTERISTICS

Characteristic	Description
Format	Space delimited ASCII
Size	46,550,000 data points (approximate)
Captured terrain model	1.2m average point separation
Supplied terrain model	3.5m estimated point density from thinned ground
Data thinning	Points not contributing to the terrain definition within 0.15m removed
Data smoothing	Cartographic dataset smoothed to 0.30m tolerances
Laser return	First and Last pulse
Laser Intensity	Supplied on both first and last pulse returns
Laser footprint size	0.2m
Contours	0.5m Cartographic Contours
Grids	2m x 2m grids (interpolated across buildings)

REFERENCE SYSTEMS

	Horizontal	Vertical
Datum	NZGD1949	Lyttleton MSL 1937
Projection	NZMG	N/A
Geoid Model	N/A	Local Geoid
Reference Point	BASE - SUMMERHILL 1 2459693.094 E 5770708.553 N	BASE - SUMMERHILL 1 281.365 RL

SOURCE DATA

	Source	Description	Ref No	Date
Laser scanning	AAMHatch	25,000 Hz	2101103	21-24.07.05
GPS base data	WDC	Static GPS	2101103	21-24.07.05
Base Stn coords	WDC	Rapid static GPS	2101103	21.07.05
Test points	WDC	RTK GPS	2101103	24.07.05
Geoid model	AAMHatch	WDC control points	2101103	15.08.05

EXPECTED ACCURACY

Project specifications and technical processes were designed to achieve data accuracies as follows:

	Measured Point	Derived Point	Basis of Estimation
Vertical data		0.150	Deductive estimate
Horizontal data	< 0.55		System specifications ($1/2000$ flying height)
Test points	0.05		Survey methodology used

Notes On Expected Accuracy

- Values shown represent standard error (68% confidence level or 1 sigma), in metres
- “Derived points” are those interpolated from a terrain model.
- “Measured points” are those observed directly.
- Accuracy estimates for terrain modeling refer to the terrain definition on clear ground. Ground definition in vegetated terrain may contain localised areas with systematic errors or outliers which fall outside this accuracy estimate
- Laser strikes have been classified into “ground” and “non-ground”, based upon algorithms tailored for major terrain/vegetation combinations existing in the project area. The definition of the ground may be less accurate in isolated pockets of dissimilar terrain/vegetation combinations.

LIMITATIONS OF DATA

- The definition of the ground under trees may be less accurate.

DATA VALIDATION

- Ground data in this volume has been compared to 176 test points obtained by field survey and assumed to be error-free. The test points were in one group across the mapping area and located on clear ground. Comparison of the test points with elevations interpolated from measured data resulted in:

Standard Error (RMS) : 0.058m

- Data classification has been manually checked and edited against imagery supplied by the client.

USE OF DATA

- Intended use : Hydrological research and management

5. CONDITIONS OF SUPPLY

The data in this volume has been commissioned by **WAIMAKARIRI DISTRICT COUNCIL AND ENVIRONMENT CANTERBURY**.

The data in this volume is provided by AAMHatch Pty Limited (AAMHatch) to **WAIMAKARIRI DISTRICT COUNCIL AND ENVIRONMENT CANTERBURY** under the client's Terms of Engagement, which allow **WAIMAKARIRI DISTRICT COUNCIL AND ENVIRONMENT CANTERBURY** to assume shared ownership with AAMHatch, in accord with documented provisions, and subject to the following conditions:

1. This file (README.PDF) is always stored with the unaltered data contained in this volume.
2. The data is not altered in any way without the approval of AAMHatch. The data may be copied from this file to another.
3. The data is not used for purposes beyond that explicitly agreed in the description of the Services provided by AAMHatch.

Any breach of these conditions will result in the immediate termination of the license issued by AAMHatch, and **WAIMAKARIRI DISTRICT COUNCIL AND ENVIRONMENT CANTERBURY** will indemnify AAMHatch from all resulting liabilities.

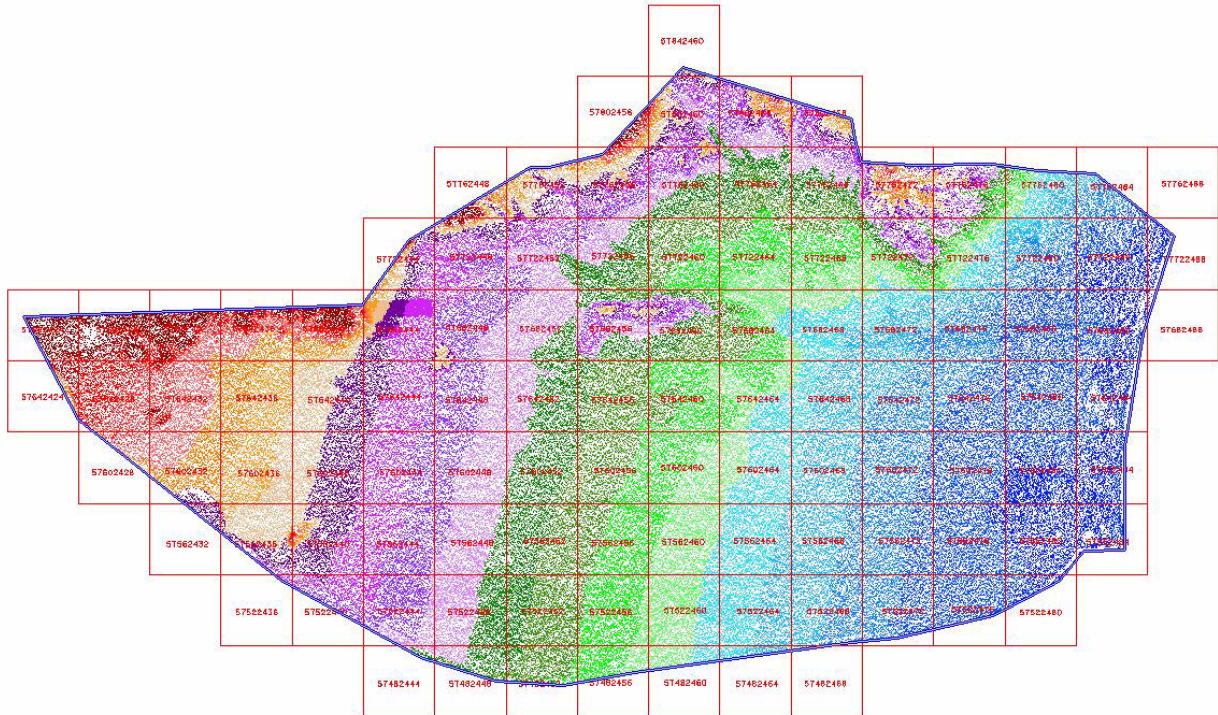
Any problems associated with the information in the data files contained in this volume should be reported to:

AAMHatch Pty Limited

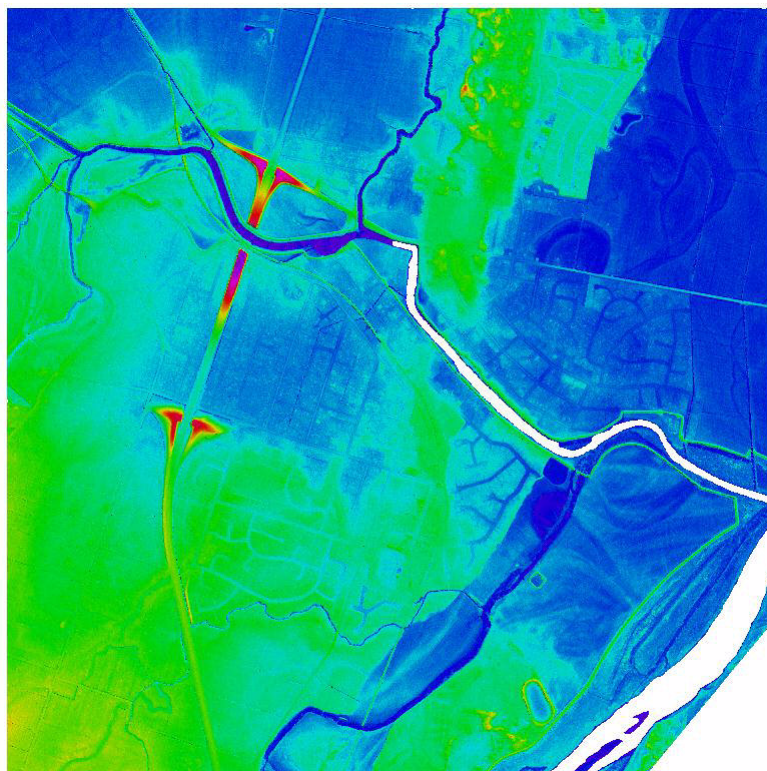
16 Julia St,
FORTITUDE VALLEY QLD 4006
Telephone (07) 3620 3111
Facsimile (07) 3620 3133
Email info@aamhatch.com.au
Web www.aamhatch.com.au

6. VALIDATION PLOT

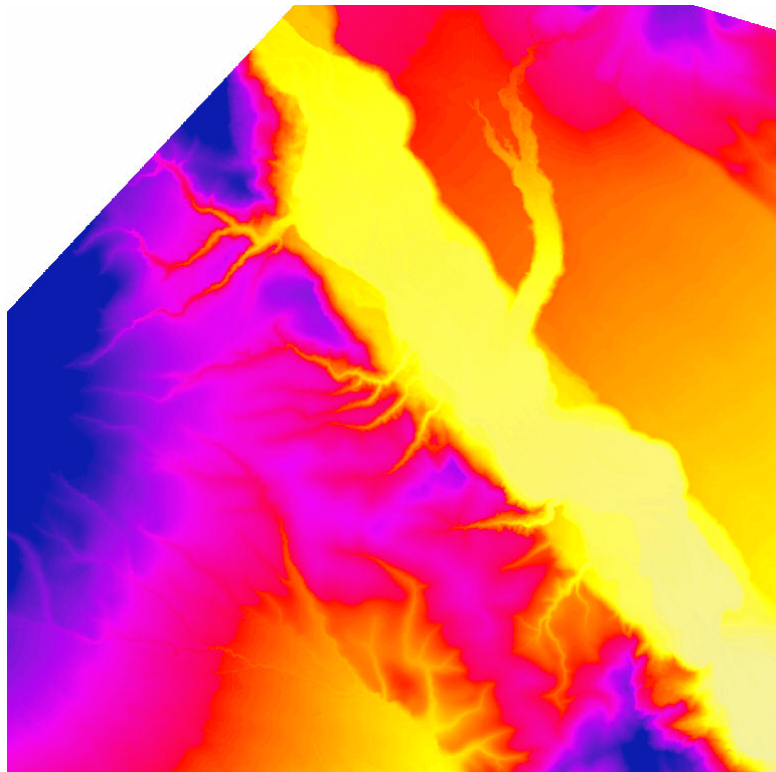
Waimakariri Validation Plot



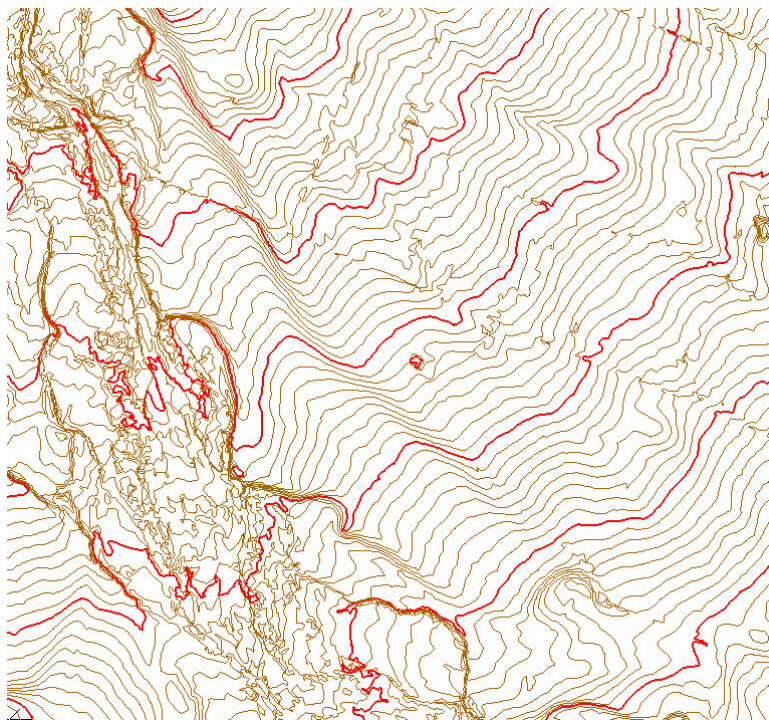
Isometric View



ESRI 2m Grid Sample



0.5m Cartographic Contour sample



7. FILES SUPPLIED

07/18/2006	11:49 AM	407,945	AAM_tile_layout_proposed.dxf	
07/18/2006	12:47 PM	119	Data_2003_Reprocessed.dbf	
07/18/2006	12:47 PM	364	Data_2003_Reprocessed.shp	
07/18/2006	12:47 PM	108	Data_2003_Reprocessed.shx	
07/18/2006	12:47 PM	10,240	Export.csf	
07/18/2006	12:47 PM	1,430	Export.log	
07/18/2006	12:47 PM	119	Extent_ECAN_WDC_Shared_Data.dbf	
07/18/2006	12:47 PM	1,084	Extent_ECAN_WDC_Shared_Data.shp	
07/18/2006	12:47 PM	108	Extent_ECAN_WDC_Shared_Data.shx	
07/18/2006	12:47 PM	119	Extent_WDC_Lidar_Data.dbf	
07/18/2006	12:47 PM	988	Extent_WDC_Lidar_Data.shp	
07/18/2006	12:47 PM	108	Extent_WDC_Lidar_Data.shx	
07/25/2006	01:27 PM	3,207,790	README.pdf	Metadata Document
07/18/2006	11:49 AM	18,753	Tile Shape Files1.zip	
07/18/2006	12:47 PM	14,098	Tiles_2km_Layout.dbf	
07/18/2006	12:47 PM	54,500	Tiles_2km_Layout.shp	
07/18/2006	12:47 PM	3,300	Tiles_2km_Layout.shx	
07/18/2006	12:47 PM	2,387	Tiles_4km_Layout.dbf	
07/18/2006	12:47 PM	14,924	Tiles_4km_Layout.shp	
07/18/2006	12:47 PM	972	Tiles_4km_Layout.shx	
07/25/2006	11:22 AM	276,802	tile_layout.dxf	Tile layout
03/13/2006	10:05 AM	96,849	geoid_model.dxf	Geoid Model
10/13/2005	05:10 AM	2,242,911	W57482444.grd	Thinned Ground Points
10/13/2005	05:10 AM	12,648,471	W57482448.grd	
10/13/2005	05:11 AM	19,675,359	W57482452.grd	
03/10/2006	12:45 PM	16,126,089	W57482456.grd	
03/10/2006	12:45 PM	8,945,348	W57482460.grd	
03/10/2006	12:45 PM	5,503,776	W57482464.grd	
03/10/2006	12:45 PM	706,464	W57482468.grd	
10/13/2005	05:14 AM	811,404	W57522436.grd	
10/13/2005	05:14 AM	15,029,190	W57522440.grd	
10/13/2005	05:15 AM	33,277,002	W57522444.grd	
10/13/2005	05:17 AM	38,248,782	W57522448.grd	
10/13/2005	05:20 AM	40,097,970	W57522452.grd	
10/13/2005	05:22 AM	36,365,745	W57522456.grd	
10/13/2005	05:24 AM	35,844,114	W57522460.grd	
03/12/2006	03:59 PM	32,408,736	W57522464.grd	
03/10/2006	12:45 PM	30,863,872	W57522468.grd	
03/10/2006	12:45 PM	27,137,632	W57522472.grd	
03/10/2006	12:45 PM	20,842,919	W57522476.grd	
03/10/2006	12:45 PM	7,515,977	W57522480.grd	
10/13/2005	05:34 AM	3,358,146	W57562432.grd	
10/13/2005	05:34 AM	26,061,882	W57562436.grd	
10/13/2005	05:36 AM	35,073,027	W57562440.grd	
10/13/2005	05:38 AM	31,811,505	W57562444.grd	
10/13/2005	05:41 AM	31,905,357	W57562448.grd	
10/13/2005	05:43 AM	30,867,870	W57562452.grd	
10/13/2005	05:45 AM	32,002,773	W57562456.grd	
10/13/2005	05:47 AM	31,712,291	W57562460.grd	
10/13/2005	05:50 AM	30,871,552	W57562464.grd	
10/13/2005	05:52 AM	28,372,031	W57562468.grd	
03/10/2006	12:46 PM	30,815,968	W57562472.grd	
03/10/2006	12:46 PM	32,376,176	W57562476.grd	
03/10/2006	12:46 PM	30,085,879	W57562480.grd	
03/10/2006	12:46 PM	13,993,455	W57562484.grd	
10/13/2005	06:03 AM	7,387,611	W57602428.grd	
10/13/2005	06:04 AM	29,587,041	W57602432.grd	
10/13/2005	06:06 AM	36,659,568	W57602436.grd	
10/13/2005	06:08 AM	32,186,352	W57602440.grd	
10/13/2005	06:10 AM	27,546,717	W57602444.grd	

WAIMAKARIRI DISTRICT COUNCIL AND ENVIRONMENT CANTERBURY

10/13/2005	06:12 AM	26,968,755	W57602448.grd
03/10/2006	12:46 PM	28,602,684	W57602452.grd
10/13/2005	06:17 AM	28,021,092	W57602456.grd
10/13/2005	06:19 AM	28,051,997	W57602460.grd
10/13/2005	06:21 AM	27,107,060	W57602464.grd
10/13/2005	06:23 AM	26,384,096	W57602468.grd
10/13/2005	06:25 AM	29,581,312	W57602472.grd
10/13/2005	06:27 AM	31,766,846	W57602476.grd
03/10/2006	12:46 PM	38,561,502	W57602480.grd
10/13/2005	06:33 AM	22,063,865	W57602484.grd
10/13/2005	06:35 AM	7,682,103	W57642424.grd
10/13/2005	06:36 AM	35,456,421	W57642428.grd
10/13/2005	06:38 AM	38,478,066	W57642432.grd
10/13/2005	06:41 AM	36,305,445	W57642436.grd
10/13/2005	06:43 AM	35,370,621	W57642440.grd
03/10/2006	12:47 PM	29,672,742	W57642444.grd
10/13/2005	06:48 AM	30,313,536	W57642448.grd
10/13/2005	06:50 AM	31,577,139	W57642452.grd
10/13/2005	06:53 AM	31,744,053	W57642456.grd
10/13/2005	06:55 AM	32,560,162	W57642460.grd
10/13/2005	06:57 AM	31,888,883	W57642464.grd
10/13/2005	07:00 AM	30,067,648	W57642468.grd
10/13/2005	07:02 AM	30,236,992	W57642472.grd
10/13/2005	07:05 AM	31,284,834	W57642476.grd
10/13/2005	07:07 AM	33,575,183	W57642480.grd
10/13/2005	07:11 AM	23,119,645	W57642484.grd
10/13/2005	07:13 AM	15,714,897	W57682424.grd
10/13/2005	07:15 AM	30,680,199	W57682428.grd
10/13/2005	07:18 AM	38,783,679	W57682432.grd
10/13/2005	07:21 AM	36,408,867	W57682436.grd
10/13/2005	07:23 AM	44,149,875	W57682440.grd
07/06/2006	01:44 PM	33,852,027	W57682444.grd
10/13/2005	07:29 AM	32,418,144	W57682448.grd
10/13/2005	07:31 AM	31,175,034	W57682452.grd
03/10/2006	12:47 PM	37,582,413	W57682456.grd
10/13/2005	07:36 AM	37,788,399	W57682460.grd
10/13/2005	07:39 AM	37,418,691	W57682464.grd
10/13/2005	07:41 AM	35,489,169	W57682468.grd
10/13/2005	07:43 AM	36,400,674	W57682472.grd
10/13/2005	07:46 AM	35,751,584	W57682476.grd
10/13/2005	07:48 AM	36,332,567	W57682480.grd
10/13/2005	07:52 AM	31,109,568	W57682484.grd
10/13/2005	07:55 AM	318,432	W57682488.grd
10/13/2005	07:55 AM	18,095,088	W57722444.grd
10/13/2005	07:56 AM	35,488,464	W57722448.grd
10/13/2005	07:58 AM	32,915,949	W57722452.grd
10/13/2005	08:01 AM	35,166,912	W57722456.grd
10/13/2005	08:03 AM	33,140,349	W57722460.grd
10/13/2005	08:05 AM	36,017,493	W57722464.grd
03/10/2006	12:47 PM	30,992,277	W57722468.grd
10/13/2005	08:10 AM	38,419,896	W57722472.grd
10/13/2005	08:12 AM	35,266,542	W57722476.grd
10/13/2005	08:15 AM	39,423,733	W57722480.grd
10/13/2005	08:19 AM	32,189,218	W57722484.grd
10/13/2005	08:21 AM	6,632,686	W57722488.grd
10/13/2005	08:22 AM	9,901,122	W57762448.grd
03/10/2006	12:47 PM	25,165,272	W57762452.grd
03/10/2006	12:47 PM	37,202,055	W57762456.grd
10/13/2005	08:26 AM	36,927,858	W57762460.grd
10/13/2005	08:28 AM	37,223,043	W57762464.grd
03/10/2006	12:48 PM	35,161,203	W57762468.grd
03/10/2006	12:48 PM	32,326,503	W57762472.grd
03/10/2006	12:48 PM	25,490,522	W57762476.grd
03/10/2006	12:48 PM	24,144,383	W57762480.grd

WAIMAKARIRI DISTRICT COUNCIL AND ENVIRONMENT CANTERBURY

10/13/2005	08:39 AM	13,593,659	W57762484.grd	
10/13/2005	08:40 AM	58,838	W57762488.grd	
10/13/2005	08:40 AM	10,306,824	W57802456.grd	
10/13/2005	08:41 AM	39,735,300	W57802460.grd	
10/13/2005	08:43 AM	36,162,885	W57802464.grd	
10/13/2005	08:45 AM	19,671,036	W57802468.grd	
10/13/2005	08:46 AM	1,635,150	W57842460.grd	
07/20/2006	10:25 AM	50,636	W57482452.fst	First Pulse Returns
07/20/2006	10:25 AM	284,587	W57482454.fst	
07/20/2006	10:25 AM	686,462	W57502446.fst	
07/20/2006	10:25 AM	1,438,865	W57502448.fst	
07/20/2006	10:25 AM	1,536,456	W57502450.fst	
07/20/2006	10:25 AM	4,200,711	W57502452.fst	
07/20/2006	10:25 AM	17,099,123	W57502454.fst	
07/20/2006	10:25 AM	17,830,254	W57502456.fst	
07/20/2006	10:25 AM	3,234,142	W57502458.fst	
07/20/2006	10:25 AM	671,355	W57502460.fst	
07/20/2006	10:25 AM	1,251,434	W57502462.fst	
07/20/2006	10:25 AM	1,341,747	W57502464.fst	
07/20/2006	10:25 AM	607	W57502466.fst	
07/20/2006	10:25 AM	2,118	W57522442.fst	
07/20/2006	10:25 AM	1,586,554	W57522444.fst	
07/20/2006	10:25 AM	653,437	W57522446.fst	
07/20/2006	10:25 AM	2,048,222	W57522448.fst	
07/20/2006	10:26 AM	4,177,484	W57522450.fst	
07/20/2006	10:26 AM	7,782,754	W57522452.fst	
07/20/2006	10:26 AM	14,597,329	W57522454.fst	
07/20/2006	10:26 AM	14,101,906	W57522456.fst	
07/20/2006	10:26 AM	9,202,218	W57522458.fst	
07/20/2006	10:26 AM	5,464,504	W57522460.fst	
07/20/2006	10:26 AM	3,870,158	W57522462.fst	
07/20/2006	10:26 AM	5,042,983	W57522464.fst	
07/20/2006	10:26 AM	440,033	W57522466.fst	
07/20/2006	10:26 AM	504,335	W57522468.fst	
07/20/2006	10:26 AM	1,262,403	W57522470.fst	
07/20/2006	10:26 AM	34,518	W57542438.fst	
07/20/2006	10:26 AM	243,073	W57542440.fst	
07/20/2006	10:26 AM	195,276	W57542442.fst	
07/20/2006	10:26 AM	9,701,879	W57542444.fst	
07/20/2006	10:26 AM	12,349,598	W57542446.fst	
07/20/2006	10:26 AM	4,895,976	W57542448.fst	
07/20/2006	10:26 AM	9,790,083	W57542450.fst	
07/20/2006	10:26 AM	9,947,730	W57542452.fst	
07/20/2006	10:26 AM	11,358,145	W57542454.fst	
07/20/2006	10:26 AM	3,275,112	W57542456.fst	
07/20/2006	10:26 AM	9,866,913	W57542458.fst	
07/20/2006	10:26 AM	7,651,481	W57542460.fst	
07/20/2006	10:27 AM	9,671,946	W57542462.fst	
07/20/2006	10:27 AM	5,631,633	W57542464.fst	
07/20/2006	10:27 AM	279,911	W57542466.fst	
07/20/2006	10:27 AM	475,506	W57542468.fst	
07/20/2006	10:27 AM	718,395	W57542470.fst	
07/20/2006	10:27 AM	158,380	W57542472.fst	
07/20/2006	10:27 AM	2,384,030	W57562436.fst	
07/20/2006	10:27 AM	2,161,887	W57562438.fst	
07/20/2006	10:27 AM	4,031,758	W57562440.fst	
07/20/2006	10:27 AM	1,383,452	W57562442.fst	
07/20/2006	10:27 AM	10,343,204	W57562444.fst	
07/20/2006	10:27 AM	9,026,073	W57562446.fst	
07/20/2006	10:27 AM	2,816,757	W57562448.fst	
07/20/2006	10:27 AM	6,925,665	W57562450.fst	
07/20/2006	10:27 AM	1,675,601	W57562452.fst	
07/20/2006	10:27 AM	705,950	W57562454.fst	
07/20/2006	10:27 AM	611,549	W57562456.fst	

WAIMAKARIRI DISTRICT COUNCIL AND ENVIRONMENT CANTERBURY

07/20/2006	10:27 AM	2,200,331	W57562458.fst
07/20/2006	10:27 AM	1,147,294	W57562460.fst
07/20/2006	10:27 AM	1,073,527	W57562462.fst
07/20/2006	10:27 AM	1,854,771	W57562464.fst
07/20/2006	10:27 AM	1,141,413	W57562466.fst
07/20/2006	10:27 AM	474,248	W57562468.fst
07/20/2006	10:27 AM	665,285	W57562470.fst
07/20/2006	10:27 AM	2,645,012	W57562472.fst
07/20/2006	10:27 AM	2,266,879	W57562474.fst
07/20/2006	10:27 AM	963,346	W57562476.fst
07/20/2006	10:27 AM	445,812	W57562478.fst
07/20/2006	10:27 AM	994,482	W57562482.fst
07/20/2006	10:27 AM	755,964	W57562484.fst
07/20/2006	10:27 AM	809,609	W57562486.fst
07/20/2006	10:27 AM	142,935	W57582434.fst
07/20/2006	10:27 AM	2,041,211	W57582436.fst
07/20/2006	10:27 AM	1,382,160	W57582438.fst
07/20/2006	10:27 AM	2,217,247	W57582440.fst
07/20/2006	10:27 AM	234,977	W57582442.fst
07/20/2006	10:27 AM	659,894	W57582444.fst
07/20/2006	10:27 AM	1,258,664	W57582446.fst
07/20/2006	10:27 AM	556,437	W57582448.fst
07/20/2006	10:27 AM	822,917	W57582450.fst
07/20/2006	10:27 AM	855,724	W57582452.fst
07/20/2006	10:27 AM	1,053,016	W57582454.fst
07/20/2006	10:27 AM	3,004,274	W57582456.fst
07/20/2006	10:27 AM	1,253,483	W57582458.fst
07/20/2006	10:27 AM	1,425,344	W57582460.fst
07/20/2006	10:27 AM	792,905	W57582462.fst
07/20/2006	10:27 AM	228,588	W57582464.fst
07/20/2006	10:27 AM	570,138	W57582466.fst
07/20/2006	10:27 AM	3,154,403	W57582468.fst
07/20/2006	10:27 AM	1,949,179	W57582470.fst
07/20/2006	10:27 AM	1,143,246	W57582472.fst
07/20/2006	10:27 AM	4,298,697	W57582474.fst
07/20/2006	10:27 AM	3,188,890	W57582476.fst
07/20/2006	10:27 AM	4,824,456	W57582478.fst
07/20/2006	10:27 AM	3,906,681	W57582480.fst
07/20/2006	10:27 AM	3,351,229	W57582482.fst
07/20/2006	10:27 AM	2,365,821	W57582484.fst
07/20/2006	10:27 AM	2,476,174	W57582486.fst
07/20/2006	10:27 AM	11,014	W57602430.fst
07/20/2006	10:27 AM	1,303,866	W57602432.fst
07/20/2006	10:27 AM	2,783,770	W57602434.fst
07/20/2006	10:27 AM	556,923	W57602436.fst
07/20/2006	10:27 AM	897,665	W57602438.fst
07/20/2006	10:27 AM	681,638	W57602440.fst
07/20/2006	10:27 AM	288,622	W57602442.fst
07/20/2006	10:27 AM	887,133	W57602444.fst
07/20/2006	10:27 AM	869,466	W57602446.fst
07/20/2006	10:27 AM	322,053	W57602448.fst
07/20/2006	10:27 AM	910,245	W57602450.fst
07/20/2006	10:27 AM	1,181,516	W57602452.fst
07/20/2006	10:27 AM	502,703	W57602454.fst
07/20/2006	10:27 AM	1,279,963	W57602456.fst
07/20/2006	10:27 AM	2,098,704	W57602458.fst
07/20/2006	10:27 AM	617,727	W57602460.fst
07/20/2006	10:27 AM	544,356	W57602462.fst
07/20/2006	10:27 AM	803,454	W57602464.fst
07/20/2006	10:27 AM	677,173	W57602466.fst
07/20/2006	10:27 AM	1,153,448	W57602468.fst
07/20/2006	10:27 AM	1,668,060	W57602470.fst
07/20/2006	10:27 AM	1,277,940	W57602472.fst
07/20/2006	10:27 AM	2,451,938	W57602474.fst

WAIMAKARIRI DISTRICT COUNCIL AND ENVIRONMENT CANTERBURY

07/20/2006	10:27 AM	2,121,788	W57602476.fst
07/20/2006	10:27 AM	2,445,684	W57602478.fst
07/20/2006	10:27 AM	2,583,804	W57602480.fst
07/20/2006	10:28 AM	3,763,903	W57602482.fst
07/20/2006	10:28 AM	7,225,321	W57602484.fst
07/20/2006	10:28 AM	4,178,473	W57602486.fst
07/20/2006	10:28 AM	85,747	W57622428.fst
07/20/2006	10:28 AM	705,341	W57622430.fst
07/20/2006	10:28 AM	1,629,572	W57622432.fst
07/20/2006	10:28 AM	530,535	W57622434.fst
07/20/2006	10:28 AM	1,049,442	W57622436.fst
07/20/2006	10:28 AM	767,852	W57622438.fst
07/20/2006	10:28 AM	532,335	W57622440.fst
07/20/2006	10:28 AM	656,994	W57622442.fst
07/20/2006	10:28 AM	622,322	W57622444.fst
07/20/2006	10:28 AM	499,397	W57622446.fst
07/20/2006	10:28 AM	192,612	W57622448.fst
07/20/2006	10:28 AM	1,417,734	W57622450.fst
07/20/2006	10:28 AM	2,372,314	W57622452.fst
07/20/2006	10:28 AM	1,216,410	W57622454.fst
07/20/2006	10:28 AM	952,391	W57622456.fst
07/20/2006	10:28 AM	362,412	W57622458.fst
07/20/2006	10:28 AM	620,458	W57622460.fst
07/20/2006	10:28 AM	728,856	W57622462.fst
07/20/2006	10:28 AM	983,886	W57622464.fst
07/20/2006	10:28 AM	746,936	W57622466.fst
07/20/2006	10:28 AM	793,890	W57622468.fst
07/20/2006	10:28 AM	944,947	W57622470.fst
07/20/2006	10:28 AM	2,088,967	W57622472.fst
07/20/2006	10:28 AM	1,163,523	W57622474.fst
07/20/2006	10:28 AM	1,642,770	W57622476.fst
07/20/2006	10:28 AM	893,280	W57622478.fst
07/20/2006	10:28 AM	6,128,802	W57622480.fst
07/20/2006	10:28 AM	3,003,348	W57622482.fst
07/20/2006	10:28 AM	5,216,604	W57622484.fst
07/20/2006	10:28 AM	3,893,379	W57622486.fst
07/20/2006	10:28 AM	101,500	W57642426.fst
07/20/2006	10:28 AM	1,050,742	W57642428.fst
07/20/2006	10:28 AM	942,254	W57642430.fst
07/20/2006	10:28 AM	1,313,355	W57642432.fst
07/20/2006	10:28 AM	497,440	W57642434.fst
07/20/2006	10:28 AM	284,189	W57642436.fst
07/20/2006	10:28 AM	693,216	W57642438.fst
07/20/2006	10:28 AM	413,159	W57642440.fst
07/20/2006	10:28 AM	744,676	W57642442.fst
07/20/2006	10:28 AM	1,011,661	W57642444.fst
07/20/2006	10:28 AM	782,310	W57642446.fst
07/20/2006	10:28 AM	1,162,963	W57642448.fst
07/20/2006	10:28 AM	1,232,216	W57642450.fst
07/20/2006	10:28 AM	1,263,631	W57642452.fst
07/20/2006	10:28 AM	493,863	W57642454.fst
07/20/2006	10:28 AM	878,218	W57642456.fst
07/20/2006	10:28 AM	1,259,424	W57642458.fst
07/20/2006	10:28 AM	958,672	W57642460.fst
07/20/2006	10:28 AM	632,197	W57642462.fst
07/20/2006	10:28 AM	1,179,929	W57642464.fst
07/20/2006	10:28 AM	1,320,462	W57642466.fst
07/20/2006	10:28 AM	788,704	W57642468.fst
07/20/2006	10:28 AM	785,475	W57642470.fst
07/20/2006	10:28 AM	2,194,142	W57642472.fst
07/20/2006	10:28 AM	2,084,106	W57642474.fst
07/20/2006	10:28 AM	2,658,162	W57642476.fst
07/20/2006	10:28 AM	1,267,112	W57642478.fst
07/20/2006	10:28 AM	3,878,738	W57642480.fst

WAIMAKARIRI DISTRICT COUNCIL AND ENVIRONMENT CANTERBURY

07/20/2006	10:28 AM	4,849,216	W57642482.fst
07/20/2006	10:28 AM	9,237,559	W57642484.fst
07/20/2006	10:28 AM	4,037,845	W57642486.fst
07/20/2006	10:28 AM	1,016,914	W57662426.fst
07/20/2006	10:28 AM	1,214,566	W57662428.fst
07/20/2006	10:28 AM	4,435,776	W57662430.fst
07/20/2006	10:28 AM	1,801,671	W57662432.fst
07/20/2006	10:28 AM	1,714,315	W57662434.fst
07/20/2006	10:28 AM	2,632,736	W57662436.fst
07/20/2006	10:28 AM	1,853,557	W57662438.fst
07/20/2006	10:28 AM	2,764,067	W57662440.fst
07/20/2006	10:28 AM	2,445,222	W57662442.fst
07/20/2006	10:28 AM	1,557,463	W57662444.fst
07/20/2006	10:28 AM	415,559	W57662446.fst
07/20/2006	10:28 AM	751,469	W57662448.fst
07/20/2006	10:28 AM	429,879	W57662450.fst
07/20/2006	10:28 AM	683,335	W57662452.fst
07/20/2006	10:28 AM	2,963,949	W57662454.fst
07/20/2006	10:28 AM	1,490,435	W57662456.fst
07/20/2006	10:28 AM	1,503,565	W57662458.fst
07/20/2006	10:28 AM	1,394,746	W57662460.fst
07/20/2006	10:28 AM	921,220	W57662462.fst
07/20/2006	10:28 AM	2,288,648	W57662464.fst
07/20/2006	10:28 AM	1,317,078	W57662466.fst
07/20/2006	10:28 AM	824,959	W57662468.fst
07/20/2006	10:28 AM	952,055	W57662470.fst
07/20/2006	10:28 AM	1,214,634	W57662472.fst
07/20/2006	10:29 AM	2,093,730	W57662474.fst
07/20/2006	10:29 AM	2,481,891	W57662476.fst
07/20/2006	10:29 AM	2,867,296	W57662478.fst
07/20/2006	10:29 AM	5,220,499	W57662480.fst
07/20/2006	10:29 AM	3,613,457	W57662482.fst
07/20/2006	10:29 AM	6,260,896	W57662484.fst
07/20/2006	10:29 AM	4,674,026	W57662486.fst
07/20/2006	10:29 AM	312,834	W57682424.fst
07/20/2006	10:29 AM	3,396,959	W57682426.fst
07/20/2006	10:29 AM	4,142,818	W57682428.fst
07/20/2006	10:29 AM	7,904,995	W57682430.fst
07/20/2006	10:29 AM	3,344,591	W57682432.fst
07/20/2006	10:29 AM	4,399,845	W57682434.fst
07/20/2006	10:29 AM	4,467,088	W57682436.fst
07/20/2006	10:29 AM	2,607,702	W57682438.fst
07/20/2006	10:29 AM	2,073,760	W57682440.fst
07/20/2006	10:29 AM	3,941,025	W57682442.fst
07/20/2006	10:29 AM	3,065,397	W57682444.fst
07/20/2006	10:29 AM	594,998	W57682446.fst
07/20/2006	10:29 AM	1,040,797	W57682448.fst
07/20/2006	10:29 AM	759,771	W57682450.fst
07/20/2006	10:29 AM	984,660	W57682452.fst
07/20/2006	10:29 AM	1,241,771	W57682454.fst
07/20/2006	10:29 AM	1,343,818	W57682456.fst
07/20/2006	10:29 AM	1,303,735	W57682458.fst
07/20/2006	10:29 AM	1,074,565	W57682460.fst
07/20/2006	10:29 AM	901,614	W57682462.fst
07/20/2006	10:29 AM	746,793	W57682464.fst
07/20/2006	10:29 AM	1,330,702	W57682466.fst
07/20/2006	10:29 AM	5,481,021	W57682468.fst
07/20/2006	10:29 AM	6,394,945	W57682470.fst
07/20/2006	10:29 AM	4,637,289	W57682472.fst
07/20/2006	10:29 AM	4,577,161	W57682474.fst
07/20/2006	10:29 AM	4,151,915	W57682476.fst
07/20/2006	10:29 AM	6,232,611	W57682478.fst
07/20/2006	10:29 AM	5,537,316	W57682480.fst
07/20/2006	10:29 AM	7,103,189	W57682482.fst

WAIMAKARIRI DISTRICT COUNCIL AND ENVIRONMENT CANTERBURY

07/20/2006	10:29 AM	5,497,985	W57682484.fst
07/20/2006	10:29 AM	3,939,507	W57682486.fst
07/20/2006	10:29 AM	1,573,879	W57702424.fst
07/20/2006	10:29 AM	1,714,059	W57702426.fst
07/20/2006	10:29 AM	2,425,440	W57702428.fst
07/20/2006	10:29 AM	2,097,072	W57702430.fst
07/20/2006	10:29 AM	2,805,596	W57702432.fst
07/20/2006	10:29 AM	1,023,006	W57702434.fst
07/20/2006	10:29 AM	1,002,659	W57702436.fst
07/20/2006	10:29 AM	1,261,559	W57702438.fst
07/20/2006	10:29 AM	542,548	W57702440.fst
07/20/2006	10:29 AM	2,140,309	W57702442.fst
07/20/2006	10:30 AM	4,193,100	W57702444.fst
07/20/2006	10:30 AM	1,051,480	W57702446.fst
07/20/2006	10:30 AM	456,869	W57702448.fst
07/20/2006	10:30 AM	812,633	W57702450.fst
07/20/2006	10:30 AM	1,186,009	W57702452.fst
07/20/2006	10:30 AM	1,186,120	W57702454.fst
07/20/2006	10:30 AM	2,707,130	W57702456.fst
07/20/2006	10:30 AM	4,826,640	W57702458.fst
07/20/2006	10:30 AM	8,706,980	W57702460.fst
07/20/2006	10:30 AM	1,452,207	W57702462.fst
07/20/2006	10:30 AM	6,122,397	W57702464.fst
07/20/2006	10:30 AM	8,399,061	W57702466.fst
07/20/2006	10:30 AM	4,600,308	W57702468.fst
07/20/2006	10:30 AM	1,157,823	W57702470.fst
07/20/2006	10:30 AM	3,562,709	W57702472.fst
07/20/2006	10:30 AM	2,726,763	W57702474.fst
07/20/2006	10:30 AM	1,945,751	W57702476.fst
07/20/2006	10:30 AM	2,608,384	W57702478.fst
07/20/2006	10:30 AM	6,525,828	W57702480.fst
07/20/2006	10:30 AM	7,910,099	W57702482.fst
07/20/2006	10:30 AM	6,837,163	W57702484.fst
07/20/2006	10:30 AM	1,364,280	W57702486.fst
07/20/2006	10:30 AM	1,359,691	W57722444.fst
07/20/2006	10:30 AM	1,671,680	W57722446.fst
07/20/2006	10:30 AM	3,216,636	W57722448.fst
07/20/2006	10:30 AM	2,827,505	W57722450.fst
07/20/2006	10:30 AM	3,448,682	W57722452.fst
07/20/2006	10:30 AM	2,854,437	W57722454.fst
07/20/2006	10:30 AM	7,621,366	W57722456.fst
07/20/2006	10:30 AM	8,340,454	W57722458.fst
07/20/2006	10:30 AM	6,828,989	W57722460.fst
07/20/2006	10:30 AM	10,072,644	W57722462.fst
07/20/2006	10:30 AM	11,800,754	W57722464.fst
07/20/2006	10:30 AM	6,116,496	W57722466.fst
07/20/2006	10:30 AM	1,898,651	W57722468.fst
07/20/2006	10:30 AM	1,790,060	W57722470.fst
07/20/2006	10:31 AM	4,101,979	W57722472.fst
07/20/2006	10:31 AM	4,240,148	W57722474.fst
07/20/2006	10:31 AM	2,773,075	W57722476.fst
07/20/2006	10:31 AM	2,088,159	W57722478.fst
07/20/2006	10:31 AM	3,377,240	W57722480.fst
07/20/2006	10:31 AM	4,422,267	W57722482.fst
07/20/2006	10:31 AM	2,979,150	W57722484.fst
07/20/2006	10:31 AM	1,831,671	W57722486.fst
07/20/2006	10:31 AM	1,715,896	W57722488.fst
07/20/2006	10:31 AM	954,443	W57742446.fst
07/20/2006	10:31 AM	2,510,610	W57742448.fst
07/20/2006	10:31 AM	1,462,785	W57742450.fst
07/20/2006	10:31 AM	3,587,063	W57742452.fst
07/20/2006	10:31 AM	1,664,432	W57742454.fst
07/20/2006	10:31 AM	3,619,533	W57742456.fst
07/20/2006	10:31 AM	3,372,618	W57742458.fst

WAIMAKARIRI DISTRICT COUNCIL AND ENVIRONMENT CANTERBURY

07/20/2006	10:31 AM	1,944,697	W57742460.fst
07/20/2006	10:31 AM	4,183,665	W57742462.fst
07/20/2006	10:31 AM	2,151,964	W57742464.fst
07/20/2006	10:31 AM	7,406,856	W57742466.fst
07/20/2006	10:31 AM	895,510	W57742468.fst
07/20/2006	10:31 AM	3,379,238	W57742470.fst
07/20/2006	10:31 AM	7,531,894	W57742472.fst
07/20/2006	10:31 AM	13,397,211	W57742474.fst
07/20/2006	10:31 AM	9,600,344	W57742476.fst
07/20/2006	10:31 AM	1,650,771	W57742478.fst
07/20/2006	10:31 AM	1,868,163	W57742480.fst
07/20/2006	10:31 AM	2,323,423	W57742482.fst
07/20/2006	10:31 AM	2,796,885	W57742484.fst
07/20/2006	10:31 AM	6,001,899	W57742486.fst
07/20/2006	10:31 AM	4,889,907	W57742488.fst
07/20/2006	10:31 AM	1,077,364	W57762448.fst
07/20/2006	10:31 AM	3,129,120	W57762450.fst
07/20/2006	10:31 AM	1,894,726	W57762452.fst
07/20/2006	10:31 AM	8,855,949	W57762454.fst
07/20/2006	10:31 AM	2,632,381	W57762456.fst
07/20/2006	10:31 AM	462,950	W57762458.fst
07/20/2006	10:31 AM	2,013,732	W57762460.fst
07/20/2006	10:31 AM	1,943,985	W57762462.fst
07/20/2006	10:31 AM	1,238,770	W57762464.fst
07/20/2006	10:31 AM	4,129,967	W57762466.fst
07/20/2006	10:31 AM	555,458	W57762468.fst
07/20/2006	10:31 AM	2,632,334	W57762470.fst
07/20/2006	10:32 AM	10,535,292	W57762472.fst
07/20/2006	10:32 AM	7,419,368	W57762474.fst
07/20/2006	10:32 AM	15,369,446	W57762476.fst
07/20/2006	10:32 AM	2,901,386	W57762478.fst
07/20/2006	10:32 AM	1,372,760	W57762480.fst
07/20/2006	10:32 AM	4,302,770	W57762482.fst
07/20/2006	10:32 AM	2,480,866	W57762484.fst
07/20/2006	10:32 AM	946,627	W57762486.fst
07/20/2006	10:32 AM	118,559	W57762488.fst
07/20/2006	10:32 AM	833,025	W57782452.fst
07/20/2006	10:32 AM	2,165,979	W57782454.fst
07/20/2006	10:32 AM	3,739,766	W57782456.fst
07/20/2006	10:32 AM	3,829,947	W57782458.fst
07/20/2006	10:32 AM	923,169	W57782460.fst
07/20/2006	10:32 AM	1,759,539	W57782462.fst
07/20/2006	10:32 AM	3,368,709	W57782464.fst
07/20/2006	10:32 AM	3,990,888	W57782466.fst
07/20/2006	10:32 AM	1,777,679	W57782468.fst
07/20/2006	10:32 AM	1,275,967	W57782470.fst
07/20/2006	10:32 AM	2,304,063	W57782472.fst
07/20/2006	10:32 AM	9,664,164	W57782474.fst
07/20/2006	10:32 AM	5,634,482	W57782476.fst
07/20/2006	10:32 AM	2,194,463	W57782478.fst
07/20/2006	10:32 AM	356,558	W57782480.fst
07/20/2006	10:32 AM	273,297	W57782482.fst
07/20/2006	10:32 AM	117,940	W57782484.fst
07/20/2006	10:32 AM	33,194	W57802456.fst
07/20/2006	10:32 AM	2,394,521	W57802458.fst
07/20/2006	10:32 AM	1,282,203	W57802460.fst
07/20/2006	10:32 AM	2,437,208	W57802462.fst
07/20/2006	10:32 AM	2,791,221	W57802464.fst
07/20/2006	10:32 AM	2,197,523	W57802466.fst
07/20/2006	10:32 AM	3,740,434	W57802468.fst
07/20/2006	10:32 AM	1,758,484	W57802470.fst
07/20/2006	10:32 AM	17,558	W57822458.fst
07/20/2006	10:32 AM	2,563,898	W57822460.fst
07/20/2006	10:32 AM	1,660,134	W57822462.fst

WAIMAKARIRI DISTRICT COUNCIL AND ENVIRONMENT CANTERBURY

07/20/2006	10:32 AM	1,521,351	W57822464.fst	
07/20/2006	10:32 AM	556,873	W57822466.fst	
07/20/2006	10:32 AM	830,700	W57822468.fst	
07/20/2006	10:32 AM	2,646	W57822470.fst	
07/20/2006	10:32 AM	8,182	W57842460.fst	
07/20/2006	10:32 AM	1,693	W57842462.fst	
10/21/2005	10:56 AM	24,742,979	W57482444_2m.asc	ESRI 2m ASCII Grid
10/21/2005	10:56 AM	167	W57482444_2m.prj	
10/21/2005	10:56 AM	28,350,030	W57482448_2m.asc	
10/21/2005	10:56 AM	167	W57482448_2m.prj	
10/21/2005	10:57 AM	30,116,492	W57482452_2m.asc	
10/21/2005	10:57 AM	167	W57482452_2m.prj	
03/21/2006	11:18 AM	28,961,181	W57482456_2m.asc	
10/21/2005	10:57 AM	167	W57482456_2m.prj	
03/21/2006	11:18 AM	27,206,990	W57482460_2m.asc	
10/21/2005	10:57 AM	167	W57482460_2m.prj	
03/21/2006	11:19 AM	25,631,906	W57482464_2m.asc	
10/21/2005	10:57 AM	167	W57482464_2m.prj	
03/21/2006	11:20 AM	24,228,850	W57482468_2m.asc	
10/21/2005	11:01 AM	167	W57482468_2m.prj	
10/21/2005	10:58 AM	24,273,026	W57522436_2m.asc	
10/21/2005	10:58 AM	167	W57522436_2m.prj	
10/21/2005	10:58 AM	29,127,004	W57522440_2m.asc	
10/21/2005	10:58 AM	167	W57522440_2m.prj	
10/21/2005	10:58 AM	34,741,443	W57522444_2m.asc	
10/21/2005	10:58 AM	167	W57522444_2m.prj	
10/21/2005	10:58 AM	35,545,552	W57522448_2m.asc	
10/21/2005	10:58 AM	167	W57522448_2m.prj	
10/21/2005	10:58 AM	35,544,747	W57522452_2m.asc	
10/21/2005	10:58 AM	167	W57522452_2m.prj	
10/21/2005	10:59 AM	35,544,393	W57522456_2m.asc	
10/21/2005	10:59 AM	167	W57522456_2m.prj	
10/21/2005	10:59 AM	35,538,856	W57522460_2m.asc	
10/21/2005	10:59 AM	167	W57522460_2m.prj	
03/21/2006	01:32 PM	35,550,557	W57522464_2m.asc	
10/21/2005	10:59 AM	167	W57522464_2m.prj	
03/21/2006	11:52 AM	35,386,656	W57522468_2m.asc	
10/21/2005	10:59 AM	167	W57522468_2m.prj	
03/21/2006	11:21 AM	34,051,990	W57522472_2m.asc	
10/21/2005	11:00 AM	167	W57522472_2m.prj	
03/21/2006	11:22 AM	31,449,401	W57522476_2m.asc	
10/21/2005	11:00 AM	167	W57522476_2m.prj	
03/21/2006	11:22 AM	26,659,412	W57522480_2m.asc	
10/21/2005	11:00 AM	167	W57522480_2m.prj	
10/21/2005	11:00 AM	25,236,977	W57562432_2m.asc	
10/21/2005	11:00 AM	167	W57562432_2m.prj	
10/21/2005	11:00 AM	33,018,604	W57562436_2m.asc	
10/21/2005	11:00 AM	167	W57562436_2m.prj	
10/21/2005	11:01 AM	35,542,153	W57562440_2m.asc	
10/21/2005	11:01 AM	167	W57562440_2m.prj	
10/21/2005	11:01 AM	35,542,331	W57562444_2m.asc	
10/21/2005	11:01 AM	167	W57562444_2m.prj	
10/21/2005	11:01 AM	35,542,542	W57562448_2m.asc	
10/21/2005	11:01 AM	167	W57562448_2m.prj	
10/21/2005	11:01 AM	35,528,050	W57562452_2m.asc	
10/21/2005	11:01 AM	167	W57562452_2m.prj	
10/21/2005	11:01 AM	35,534,241	W57562456_2m.asc	
10/21/2005	11:01 AM	167	W57562456_2m.prj	
10/21/2005	11:02 AM	35,533,066	W57562460_2m.asc	
10/21/2005	11:02 AM	167	W57562460_2m.prj	
07/05/2006	08:12 AM	35,513,673	W57562464_2m.asc	
07/05/2006	08:12 AM	167	W57562464_2m.prj	
10/21/2005	11:02 AM	35,524,723	W57562468_2m.asc	
10/21/2005	11:02 AM	167	W57562468_2m.prj	

WAIMAKARIRI DISTRICT COUNCIL AND ENVIRONMENT CANTERBURY

03/21/2006	11:23 AM	35,551,257	W57562472_2m.asc
10/21/2005	11:02 AM	167	W57562472_2m.prj
03/21/2006	11:24 AM	35,549,006	W57562476_2m.asc
10/21/2005	11:02 AM	167	W57562476_2m.prj
03/21/2006	11:25 AM	35,715,572	W57562480_2m.asc
10/21/2005	11:03 AM	167	W57562480_2m.prj
03/21/2006	11:25 AM	29,567,236	W57562484_2m.asc
10/21/2005	11:03 AM	167	W57562484_2m.prj
10/21/2005	11:03 AM	26,785,139	W57602428_2m.asc
10/21/2005	11:03 AM	167	W57602428_2m.prj
10/21/2005	11:03 AM	34,471,866	W57602432_2m.asc
10/21/2005	11:03 AM	167	W57602432_2m.prj
10/21/2005	11:03 AM	35,522,993	W57602436_2m.asc
10/21/2005	11:03 AM	167	W57602436_2m.prj
10/21/2005	11:04 AM	35,532,560	W57602440_2m.asc
10/21/2005	11:04 AM	167	W57602440_2m.prj
10/21/2005	11:04 AM	35,537,604	W57602444_2m.asc
10/21/2005	11:04 AM	167	W57602444_2m.prj
10/21/2005	11:04 AM	35,538,175	W57602448_2m.asc
10/21/2005	11:04 AM	167	W57602448_2m.prj
03/21/2006	11:26 AM	35,554,267	W57602452_2m.asc
10/21/2005	11:04 AM	167	W57602452_2m.prj
10/21/2005	11:05 AM	35,522,732	W57602456_2m.asc
10/21/2005	11:05 AM	167	W57602456_2m.prj
10/21/2005	11:05 AM	35,536,291	W57602460_2m.asc
10/21/2005	11:05 AM	167	W57602460_2m.prj
10/21/2005	11:05 AM	35,516,537	W57602464_2m.asc
10/21/2005	11:05 AM	167	W57602464_2m.prj
10/21/2005	11:05 AM	35,514,907	W57602468_2m.asc
10/21/2005	11:05 AM	167	W57602468_2m.prj
10/21/2005	11:05 AM	35,516,885	W57602472_2m.asc
10/21/2005	11:05 AM	167	W57602472_2m.prj
10/21/2005	11:06 AM	35,519,236	W57602476_2m.asc
10/21/2005	11:06 AM	167	W57602476_2m.prj
03/21/2006	11:27 AM	35,615,675	W57602480_2m.asc
10/21/2005	11:06 AM	167	W57602480_2m.prj
10/21/2005	11:06 AM	31,640,877	W57602484_2m.asc
10/21/2005	11:06 AM	167	W57602484_2m.prj
10/21/2005	11:06 AM	26,041,248	W57642424_2m.asc
10/21/2005	11:06 AM	167	W57642424_2m.prj
10/21/2005	11:06 AM	35,319,773	W57642428_2m.asc
10/21/2005	11:06 AM	167	W57642428_2m.prj
10/21/2005	11:07 AM	35,536,166	W57642432_2m.asc
10/21/2005	11:07 AM	167	W57642432_2m.prj
10/21/2005	11:07 AM	35,528,191	W57642436_2m.asc
10/21/2005	11:07 AM	167	W57642436_2m.prj
10/21/2005	11:07 AM	35,535,358	W57642440_2m.asc
10/21/2005	11:07 AM	167	W57642440_2m.prj
03/21/2006	11:27 AM	35,555,928	W57642444_2m.asc
10/21/2005	11:07 AM	167	W57642444_2m.prj
10/21/2005	11:08 AM	35,541,541	W57642448_2m.asc
10/21/2005	11:08 AM	167	W57642448_2m.prj
10/21/2005	11:08 AM	35,535,355	W57642452_2m.asc
10/21/2005	11:08 AM	167	W57642452_2m.prj
10/21/2005	11:08 AM	35,525,245	W57642456_2m.asc
10/21/2005	11:08 AM	167	W57642456_2m.prj
10/21/2005	11:08 AM	35,535,918	W57642460_2m.asc
10/21/2005	11:08 AM	167	W57642460_2m.prj
10/21/2005	11:08 AM	35,534,341	W57642464_2m.asc
10/21/2005	11:08 AM	167	W57642464_2m.prj
10/21/2005	11:08 AM	35,515,056	W57642468_2m.asc
10/21/2005	11:08 AM	167	W57642468_2m.prj
10/21/2005	11:09 AM	35,524,944	W57642472_2m.asc
10/21/2005	11:09 AM	167	W57642472_2m.prj

WAIMAKARIRI DISTRICT COUNCIL AND ENVIRONMENT CANTERBURY

10/21/2005	11:09 AM	35,527,499	W57642476_2m.asc
10/21/2005	11:09 AM	167	W57642476_2m.prj
10/21/2005	11:09 AM	35,514,555	W57642480_2m.asc
10/21/2005	11:09 AM	167	W57642480_2m.prj
10/21/2005	11:09 AM	32,763,260	W57642484_2m.asc
10/21/2005	11:09 AM	167	W57642484_2m.prj
07/05/2006	08:12 AM	28,437,896	W57682424_2m.asc
07/05/2006	08:12 AM	167	W57682424_2m.prj
10/21/2005	11:10 AM	31,686,439	W57682428_2m.asc
10/21/2005	11:10 AM	167	W57682428_2m.prj
10/21/2005	11:10 AM	32,067,214	W57682432_2m.asc
10/21/2005	11:10 AM	167	W57682432_2m.prj
10/21/2005	11:10 AM	32,439,965	W57682436_2m.asc
10/21/2005	11:10 AM	167	W57682436_2m.prj
10/21/2005	11:10 AM	32,827,774	W57682440_2m.asc
10/21/2005	11:10 AM	167	W57682440_2m.prj
10/21/2005	11:10 AM	35,371,208	W57682444_2m.asc
10/21/2005	11:10 AM	167	W57682444_2m.prj
10/21/2005	11:11 AM	35,540,760	W57682448_2m.asc
10/21/2005	11:11 AM	167	W57682448_2m.prj
10/21/2005	11:11 AM	35,539,626	W57682452_2m.asc
10/21/2005	11:11 AM	167	W57682452_2m.prj
03/21/2006	11:28 AM	35,559,332	W57682456_2m.asc
10/21/2005	11:11 AM	167	W57682456_2m.prj
07/05/2006	08:13 AM	35,540,772	W57682460_2m.asc
07/05/2006	08:13 AM	167	W57682460_2m.prj
10/21/2005	11:11 AM	35,538,072	W57682464_2m.asc
10/21/2005	11:11 AM	167	W57682464_2m.prj
10/21/2005	11:12 AM	35,530,421	W57682468_2m.asc
10/21/2005	11:12 AM	167	W57682468_2m.prj
10/21/2005	11:12 AM	35,531,475	W57682472_2m.asc
10/21/2005	11:12 AM	167	W57682472_2m.prj
10/21/2005	11:12 AM	35,532,533	W57682476_2m.asc
10/21/2005	11:12 AM	167	W57682476_2m.prj
10/21/2005	11:12 AM	35,518,200	W57682480_2m.asc
10/21/2005	11:12 AM	167	W57682480_2m.prj
10/21/2005	11:12 AM	35,227,986	W57682484_2m.asc
10/21/2005	11:12 AM	167	W57682484_2m.prj
10/21/2005	11:13 AM	24,179,755	W57682488_2m.asc
10/21/2005	11:13 AM	167	W57682488_2m.prj
10/21/2005	11:13 AM	29,310,735	W57722444_2m.asc
10/21/2005	11:13 AM	167	W57722444_2m.prj
10/21/2005	11:13 AM	35,458,720	W57722448_2m.asc
10/21/2005	11:13 AM	167	W57722448_2m.prj
10/21/2005	11:13 AM	35,542,357	W57722452_2m.asc
10/21/2005	11:13 AM	167	W57722452_2m.prj
10/21/2005	11:13 AM	35,538,884	W57722456_2m.asc
10/21/2005	11:13 AM	167	W57722456_2m.prj
10/21/2005	11:14 AM	35,533,469	W57722460_2m.asc
10/21/2005	11:14 AM	167	W57722460_2m.prj
10/21/2005	11:14 AM	35,539,486	W57722464_2m.asc
10/21/2005	11:14 AM	167	W57722464_2m.prj
03/21/2006	11:29 AM	35,554,959	W57722468_2m.asc
10/21/2005	11:14 AM	167	W57722468_2m.prj
07/05/2006	08:13 AM	35,550,378	W57722472_2m.asc
07/05/2006	08:13 AM	167	W57722472_2m.prj
10/21/2005	11:14 AM	35,543,503	W57722476_2m.asc
10/21/2005	11:14 AM	167	W57722476_2m.prj
10/21/2005	11:15 AM	35,525,912	W57722480_2m.asc
10/21/2005	11:15 AM	167	W57722480_2m.prj
10/21/2005	11:15 AM	35,525,144	W57722484_2m.asc
10/21/2005	11:15 AM	167	W57722484_2m.prj
10/21/2005	11:15 AM	26,537,548	W57722488_2m.asc
10/21/2005	11:15 AM	167	W57722488_2m.prj

WAIMAKARIRI DISTRICT COUNCIL AND ENVIRONMENT CANTERBURY

10/21/2005	11:15 AM	26,465,495	W57762448_2m.asc	
10/21/2005	11:15 AM	167	W57762448_2m.prj	
03/21/2006	11:30 AM	32,083,958	W57762452_2m.asc	
10/21/2005	11:15 AM	167	W57762452_2m.prj	
03/21/2006	11:30 AM	34,932,338	W57762456_2m.asc	
10/21/2005	11:16 AM	167	W57762456_2m.prj	
10/21/2005	11:16 AM	35,541,895	W57762460_2m.asc	
10/21/2005	11:16 AM	167	W57762460_2m.prj	
10/21/2005	11:16 AM	35,536,235	W57762464_2m.asc	
10/21/2005	11:16 AM	167	W57762464_2m.prj	
03/21/2006	11:31 AM	35,446,674	W57762468_2m.asc	
10/21/2005	11:16 AM	167	W57762468_2m.prj	
03/21/2006	11:31 AM	32,814,199	W57762472_2m.asc	
10/21/2005	11:16 AM	167	W57762472_2m.prj	
03/21/2006	11:32 AM	32,516,935	W57762476_2m.asc	
10/21/2005	11:16 AM	167	W57762476_2m.prj	
03/21/2006	11:33 AM	31,851,701	W57762480_2m.asc	
10/21/2005	11:17 AM	167	W57762480_2m.prj	
10/21/2005	11:17 AM	28,868,281	W57762484_2m.asc	
10/21/2005	11:17 AM	167	W57762484_2m.prj	
10/21/2005	11:17 AM	24,022,520	W57762488_2m.asc	
10/21/2005	11:17 AM	167	W57762488_2m.prj	
10/21/2005	11:17 AM	25,956,041	W57802456_2m.asc	
10/21/2005	11:17 AM	167	W57802456_2m.prj	
10/21/2005	11:17 AM	34,671,327	W57802460_2m.asc	
10/21/2005	11:17 AM	167	W57802460_2m.prj	
10/21/2005	11:18 AM	33,365,351	W57802464_2m.asc	
10/21/2005	11:18 AM	167	W57802464_2m.prj	
10/21/2005	11:18 AM	29,317,430	W57802468_2m.asc	
10/21/2005	11:18 AM	167	W57802468_2m.prj	
10/21/2005	11:18 AM	24,346,477	W57842460_2m.asc	
10/21/2005	11:18 AM	167	W57842460_2m.prj	
03/26/2006	04:16 PM	188,898	W57482444.dbf	ESRI Shapefile Contours
03/26/2006	04:16 PM	407	W57482444.prj	
03/26/2006	04:16 PM	2,284	W57482444.sbn	
03/26/2006	04:16 PM	284	W57482444.sbx	
03/26/2006	04:16 PM	1,913,156	W57482444.shp	
03/26/2006	04:16 PM	1,892	W57482444.shx	
03/26/2006	04:16 PM	424,658	W57482448.dbf	
03/26/2006	04:16 PM	407	W57482448.prj	
03/26/2006	04:16 PM	4,972	W57482448.sbn	
03/26/2006	04:16 PM	452	W57482448.sbx	
03/26/2006	04:16 PM	6,285,796	W57482448.shp	
03/26/2006	04:16 PM	4,132	W57482448.shx	
03/26/2006	04:16 PM	818,714	W57482452.dbf	
03/26/2006	04:16 PM	407	W57482452.prj	
03/26/2006	04:16 PM	9,788	W57482452.sbn	
03/26/2006	04:16 PM	996	W57482452.sbx	
03/26/2006	04:16 PM	7,899,620	W57482452.shp	
03/26/2006	04:16 PM	7,876	W57482452.shx	
03/26/2006	04:16 PM	455,812	W57482456.dbf	
03/26/2006	04:16 PM	407	W57482456.prj	
03/26/2006	04:16 PM	6,076	W57482456.sbn	
03/26/2006	04:16 PM	732	W57482456.sbx	
03/26/2006	04:16 PM	5,091,068	W57482456.shp	
03/26/2006	04:16 PM	4,428	W57482456.shx	
03/26/2006	04:16 PM	271,414	W57482460.dbf	
03/26/2006	04:16 PM	407	W57482460.prj	
03/26/2006	04:16 PM	3,420	W57482460.sbn	
03/26/2006	04:16 PM	340	W57482460.sbx	
03/26/2006	04:16 PM	2,114,676	W57482460.shp	
03/26/2006	04:16 PM	2,676	W57482460.shx	
03/26/2006	04:16 PM	302,568	W57482464.dbf	
03/26/2006	04:16 PM	407	W57482464.prj	

WAIMAKARIRI DISTRICT COUNCIL AND ENVIRONMENT CANTERBURY

03/26/2006	04:16	PM	3,828	W57482464.sbn
03/26/2006	04:16	PM	452	W57482464.sbx
03/26/2006	04:16	PM	3,024,364	W57482464.shp
03/26/2006	04:16	PM	2,972	W57482464.shx
03/26/2006	04:16	PM	132,484	W57482468.dbf
03/26/2006	04:16	PM	407	W57482468.prj
03/26/2006	04:16	PM	1,748	W57482468.sbn
03/26/2006	04:16	PM	244	W57482468.sbx
03/26/2006	04:16	PM	525,116	W57482468.shp
03/26/2006	04:16	PM	1,356	W57482468.shx
03/26/2006	04:16	PM	76,070	W57522436.dbf
03/26/2006	04:16	PM	407	W57522436.prj
03/26/2006	04:16	PM	1,012	W57522436.sbn
03/26/2006	04:16	PM	188	W57522436.sbx
03/26/2006	04:16	PM	520,436	W57522436.shp
03/26/2006	04:16	PM	820	W57522436.shx
03/26/2006	04:16	PM	353,930	W57522440.dbf
03/26/2006	04:16	PM	407	W57522440.prj
03/26/2006	04:16	PM	4,228	W57522440.sbn
03/26/2006	04:16	PM	428	W57522440.sbx
03/26/2006	04:16	PM	7,036,772	W57522440.shp
03/26/2006	04:16	PM	3,460	W57522440.shx
03/26/2006	04:16	PM	820,398	W57522444.dbf
03/26/2006	04:16	PM	407	W57522444.prj
03/26/2006	04:16	PM	9,628	W57522444.sbn
03/26/2006	04:16	PM	852	W57522444.sbx
03/26/2006	04:16	PM	10,855,604	W57522444.shp
03/26/2006	04:16	PM	7,892	W57522444.shx
03/26/2006	04:17	PM	1,220,348	W57522448.dbf
03/26/2006	04:16	PM	407	W57522448.prj
03/26/2006	04:17	PM	15,244	W57522448.sbn
03/26/2006	04:17	PM	1,612	W57522448.sbx
03/26/2006	04:17	PM	11,565,020	W57522448.shp
03/26/2006	04:17	PM	11,692	W57522448.shx
03/26/2006	04:17	PM	1,426,638	W57522452.dbf
03/26/2006	04:17	PM	407	W57522452.prj
03/26/2006	04:17	PM	17,524	W57522452.sbn
03/26/2006	04:17	PM	1,932	W57522452.sbx
03/26/2006	04:17	PM	12,757,492	W57522452.shp
03/26/2006	04:17	PM	13,652	W57522452.shx
03/26/2006	04:17	PM	1,006,480	W57522456.dbf
03/26/2006	04:17	PM	407	W57522456.prj
03/26/2006	04:17	PM	13,028	W57522456.sbn
03/26/2006	04:17	PM	1,428	W57522456.sbx
03/26/2006	04:17	PM	9,193,868	W57522456.shp
03/26/2006	04:17	PM	9,660	W57522456.shx
03/26/2006	04:17	PM	823,766	W57522460.dbf
03/26/2006	04:17	PM	407	W57522460.prj
03/26/2006	04:17	PM	9,676	W57522460.sbn
03/26/2006	04:17	PM	836	W57522460.sbx
03/26/2006	04:17	PM	7,965,652	W57522460.shp
03/26/2006	04:17	PM	7,924	W57522460.shx
03/26/2006	04:17	PM	436,446	W57522464.dbf
03/26/2006	04:17	PM	407	W57522464.prj
03/26/2006	04:17	PM	5,868	W57522464.sbn
03/26/2006	04:17	PM	708	W57522464.sbx
03/26/2006	04:17	PM	3,534,132	W57522464.shp
03/26/2006	04:17	PM	4,244	W57522464.shx
03/26/2006	04:17	PM	645,262	W57522468.dbf
03/26/2006	04:17	PM	407	W57522468.prj
03/26/2006	04:17	PM	7,884	W57522468.sbn
03/26/2006	04:17	PM	740	W57522468.sbx
03/26/2006	04:17	PM	7,360,436	W57522468.shp
03/26/2006	04:17	PM	6,228	W57522468.shx

WAIMAKARIRI DISTRICT COUNCIL AND ENVIRONMENT CANTERBURY

03/26/2006	04:17	PM	516,436	W57522472.dbf
03/26/2006	04:17	PM	407	W57522472.prj
03/26/2006	04:17	PM	6,708	W57522472.sbn
03/26/2006	04:17	PM	788	W57522472.sbx
03/26/2006	04:17	PM	5,328,188	W57522472.shp
03/26/2006	04:17	PM	5,004	W57522472.shx
03/26/2006	04:17	PM	835,554	W57522476.dbf
03/26/2006	04:17	PM	407	W57522476.prj
03/26/2006	04:17	PM	9,868	W57522476.sbn
03/26/2006	04:17	PM	916	W57522476.sbx
03/26/2006	04:17	PM	6,805,444	W57522476.shp
03/26/2006	04:17	PM	8,036	W57522476.shx
03/26/2006	04:17	PM	585,480	W57522480.dbf
03/26/2006	04:17	PM	407	W57522480.prj
03/26/2006	04:17	PM	7,332	W57522480.sbn
03/26/2006	04:17	PM	756	W57522480.sbx
03/26/2006	04:17	PM	5,020,876	W57522480.shp
03/26/2006	04:17	PM	5,660	W57522480.shx
03/26/2006	04:17	PM	278,992	W57562432.dbf
03/26/2006	04:17	PM	407	W57562432.prj
03/26/2006	04:17	PM	3,476	W57562432.sbn
03/26/2006	04:17	PM	404	W57562432.sbx
03/26/2006	04:17	PM	1,940,012	W57562432.shp
03/26/2006	04:17	PM	2,748	W57562432.shx
03/26/2006	04:17	PM	1,126,044	W57562436.dbf
03/26/2006	04:17	PM	407	W57562436.prj
03/26/2006	04:17	PM	13,628	W57562436.sbn
03/26/2006	04:17	PM	1,004	W57562436.sbx
03/26/2006	04:17	PM	21,500,444	W57562436.shp
03/26/2006	04:17	PM	10,796	W57562436.shx
03/26/2006	04:17	PM	1,232,136	W57562440.dbf
03/26/2006	04:17	PM	407	W57562440.prj
03/26/2006	04:17	PM	14,772	W57562440.sbn
03/26/2006	04:17	PM	1,028	W57562440.sbx
03/26/2006	04:17	PM	21,218,668	W57562440.shp
03/26/2006	04:17	PM	11,804	W57562440.shx
03/26/2006	04:17	PM	600,636	W57562444.dbf
03/26/2006	04:17	PM	407	W57562444.prj
03/26/2006	04:17	PM	7,452	W57562444.sbn
03/26/2006	04:17	PM	732	W57562444.sbx
03/26/2006	04:17	PM	7,100,348	W57562444.shp
03/26/2006	04:17	PM	5,804	W57562444.shx
03/26/2006	04:17	PM	580,428	W57562448.dbf
03/26/2006	04:17	PM	407	W57562448.prj
03/26/2006	04:17	PM	7,212	W57562448.sbn
03/26/2006	04:17	PM	684	W57562448.sbx
03/26/2006	04:17	PM	6,612,572	W57562448.shp
03/26/2006	04:17	PM	5,612	W57562448.shx
03/26/2006	04:17	PM	299,200	W57562452.dbf
03/26/2006	04:17	PM	407	W57562452.prj
03/26/2006	04:17	PM	3,748	W57562452.sbn
03/26/2006	04:17	PM	404	W57562452.sbx
03/26/2006	04:17	PM	3,783,276	W57562452.shp
03/26/2006	04:17	PM	2,940	W57562452.shx
03/26/2006	04:17	PM	339,616	W57562456.dbf
03/26/2006	04:17	PM	407	W57562456.prj
03/26/2006	04:17	PM	4,148	W57562456.sbn
03/26/2006	04:17	PM	420	W57562456.sbx
03/26/2006	04:17	PM	5,022,188	W57562456.shp
03/26/2006	04:17	PM	3,324	W57562456.shx
03/26/2006	04:18	PM	412,028	W57562460.dbf
03/26/2006	04:17	PM	407	W57562460.prj
03/26/2006	04:18	PM	4,852	W57562460.sbn
03/26/2006	04:18	PM	452	W57562460.sbx

WAIMAKARIRI DISTRICT COUNCIL AND ENVIRONMENT CANTERBURY

03/26/2006	04:18	PM	5,837,692	W57562460.shp
03/26/2006	04:18	PM	4,012	W57562460.shx
03/26/2006	04:18	PM	332,880	W57562464.dbf
03/26/2006	04:18	PM	407	W57562464.prj
03/26/2006	04:18	PM	4,124	W57562464.sbn
03/26/2006	04:18	PM	460	W57562464.sbx
03/26/2006	04:18	PM	5,384,780	W57562464.shp
03/26/2006	04:18	PM	3,260	W57562464.shx
03/26/2006	04:18	PM	421,290	W57562468.dbf
03/26/2006	04:18	PM	407	W57562468.prj
03/26/2006	04:18	PM	5,012	W57562468.sbn
03/26/2006	04:18	PM	508	W57562468.sbx
03/26/2006	04:18	PM	4,291,364	W57562468.shp
03/26/2006	04:18	PM	4,100	W57562468.shx
03/26/2006	04:18	PM	621,686	W57562472.dbf
03/26/2006	04:18	PM	407	W57562472.prj
03/26/2006	04:18	PM	7,724	W57562472.sbn
03/26/2006	04:18	PM	804	W57562472.sbx
03/26/2006	04:18	PM	5,550,836	W57562472.shp
03/26/2006	04:18	PM	6,004	W57562472.shx
03/26/2006	04:18	PM	1,048,580	W57562476.dbf
03/26/2006	04:18	PM	407	W57562476.prj
03/26/2006	04:18	PM	13,732	W57562476.sbn
03/26/2006	04:18	PM	1,732	W57562476.sbx
03/26/2006	04:18	PM	9,395,420	W57562476.shp
03/26/2006	04:18	PM	10,060	W57562476.shx
03/26/2006	04:18	PM	2,154,126	W57562480.dbf
03/26/2006	04:18	PM	407	W57562480.prj
03/26/2006	04:18	PM	27,668	W57562480.sbn
03/26/2006	04:18	PM	3,116	W57562480.sbx
03/26/2006	04:18	PM	13,427,700	W57562480.shp
03/26/2006	04:18	PM	20,564	W57562480.shx
03/26/2006	04:18	PM	1,833,324	W57562484.dbf
03/26/2006	04:18	PM	407	W57562484.prj
03/26/2006	04:18	PM	23,868	W57562484.sbn
03/26/2006	04:18	PM	2,364	W57562484.sbx
03/26/2006	04:18	PM	11,130,748	W57562484.shp
03/26/2006	04:18	PM	17,516	W57562484.shx
03/26/2006	04:18	PM	433,078	W57602428.dbf
03/26/2006	04:18	PM	407	W57602428.prj
03/26/2006	04:18	PM	5,348	W57602428.sbn
03/26/2006	04:18	PM	388	W57602428.sbx
03/26/2006	04:18	PM	10,169,204	W57602428.shp
03/26/2006	04:18	PM	4,212	W57602428.shx
03/26/2006	04:18	PM	670,522	W57602432.dbf
03/26/2006	04:18	PM	407	W57602432.prj
03/26/2006	04:18	PM	8,044	W57602432.sbn
03/26/2006	04:18	PM	692	W57602432.sbx
03/26/2006	04:18	PM	14,912,324	W57602432.shp
03/26/2006	04:18	PM	6,468	W57602432.shx
03/26/2006	04:18	PM	227,630	W57602436.dbf
03/26/2006	04:18	PM	407	W57602436.prj
03/26/2006	04:18	PM	3,068	W57602436.sbn
03/26/2006	04:18	PM	404	W57602436.sbx
03/26/2006	04:18	PM	4,075,508	W57602436.shp
03/26/2006	04:18	PM	2,260	W57602436.shx
03/26/2006	04:18	PM	183,004	W57602440.dbf
03/26/2006	04:18	PM	407	W57602440.prj
03/26/2006	04:18	PM	2,292	W57602440.sbn
03/26/2006	04:18	PM	308	W57602440.sbx
03/26/2006	04:18	PM	2,961,436	W57602440.shp
03/26/2006	04:18	PM	1,836	W57602440.shx
03/26/2006	04:18	PM	257,942	W57602444.dbf
03/26/2006	04:18	PM	407	W57602444.prj

WAIMAKARIRI DISTRICT COUNCIL AND ENVIRONMENT CANTERBURY

03/26/2006	04:18	PM	3,380	W57602444.sbn
03/26/2006	04:18	PM	428	W57602444.sbx
03/26/2006	04:18	PM	3,658,964	W57602444.shp
03/26/2006	04:18	PM	2,548	W57602444.shx
03/26/2006	04:18	PM	237,734	W57602448.dbf
03/26/2006	04:18	PM	407	W57602448.prj
03/26/2006	04:18	PM	3,132	W57602448.sbn
03/26/2006	04:18	PM	372	W57602448.sbx
03/26/2006	04:18	PM	3,860,468	W57602448.shp
03/26/2006	04:18	PM	2,356	W57602448.shx
03/26/2006	04:18	PM	485,282	W57602452.dbf
03/26/2006	04:18	PM	407	W57602452.prj
03/26/2006	04:18	PM	6,428	W57602452.sbn
03/26/2006	04:18	PM	804	W57602452.sbx
03/26/2006	04:18	PM	6,049,476	W57602452.shp
03/26/2006	04:18	PM	4,708	W57602452.shx
03/26/2006	04:18	PM	366,560	W57602456.dbf
03/26/2006	04:18	PM	407	W57602456.prj
03/26/2006	04:18	PM	4,476	W57602456.sbn
03/26/2006	04:18	PM	492	W57602456.sbx
03/26/2006	04:18	PM	4,820,172	W57602456.shp
03/26/2006	04:18	PM	3,580	W57602456.shx
03/26/2006	04:18	PM	394,346	W57602460.dbf
03/26/2006	04:18	PM	407	W57602460.prj
03/26/2006	04:18	PM	4,748	W57602460.sbn
03/26/2006	04:18	PM	500	W57602460.sbx
03/26/2006	04:18	PM	5,261,732	W57602460.shp
03/26/2006	04:18	PM	3,844	W57602460.shx
03/26/2006	04:18	PM	290,780	W57602464.dbf
03/26/2006	04:18	PM	407	W57602464.prj
03/26/2006	04:18	PM	3,684	W57602464.sbn
03/26/2006	04:18	PM	420	W57602464.sbx
03/26/2006	04:18	PM	3,530,556	W57602464.shp
03/26/2006	04:18	PM	2,860	W57602464.shx
03/26/2006	04:18	PM	236,050	W57602468.dbf
03/26/2006	04:18	PM	407	W57602468.prj
03/26/2006	04:18	PM	3,164	W57602468.sbn
03/26/2006	04:18	PM	420	W57602468.sbx
03/26/2006	04:18	PM	2,870,564	W57602468.shp
03/26/2006	04:18	PM	2,340	W57602468.shx
03/26/2006	04:19	PM	598,952	W57602472.dbf
03/26/2006	04:18	PM	407	W57602472.prj
03/26/2006	04:19	PM	7,644	W57602472.sbn
03/26/2006	04:19	PM	940	W57602472.sbx
03/26/2006	04:19	PM	7,712,748	W57602472.shp
03/26/2006	04:19	PM	5,788	W57602472.shx
03/26/2006	04:19	PM	704,202	W57602476.dbf
03/26/2006	04:19	PM	407	W57602476.prj
03/26/2006	04:19	PM	8,596	W57602476.sbn
03/26/2006	04:19	PM	892	W57602476.sbx
03/26/2006	04:19	PM	7,745,572	W57602476.shp
03/26/2006	04:19	PM	6,788	W57602476.shx
03/26/2006	04:19	PM	2,152,442	W57602480.dbf
03/26/2006	04:19	PM	407	W57602480.prj
03/26/2006	04:19	PM	27,228	W57602480.sbn
03/26/2006	04:19	PM	2,692	W57602480.sbx
03/26/2006	04:19	PM	12,183,428	W57602480.shp
03/26/2006	04:19	PM	20,548	W57602480.shx
03/26/2006	04:19	PM	3,411,232	W57602484.dbf
03/26/2006	04:19	PM	407	W57602484.prj
03/26/2006	04:19	PM	39,828	W57602484.sbn
03/26/2006	04:19	PM	3,364	W57602484.sbx
03/26/2006	04:19	PM	20,263,692	W57602484.shp
03/26/2006	04:19	PM	32,508	W57602484.shx

WAIMAKARIRI DISTRICT COUNCIL AND ENVIRONMENT CANTERBURY

03/26/2006	04:19	PM	556,010	W57642424.dbf
03/26/2006	04:19	PM	407	W57642424.prj
03/26/2006	04:19	PM	6,540	W57642424.sbn
03/26/2006	04:19	PM	412	W57642424.sbx
03/26/2006	04:19	PM	16,812,548	W57642424.shp
03/26/2006	04:19	PM	5,380	W57642424.shx
03/26/2006	04:19	PM	1,205,192	W57642428.dbf
03/26/2006	04:19	PM	407	W57642428.prj
03/26/2006	04:19	PM	14,460	W57642428.sbn
03/26/2006	04:19	PM	980	W57642428.sbx
03/26/2006	04:19	PM	14,666,188	W57642428.shp
03/26/2006	04:19	PM	11,548	W57642428.shx
03/26/2006	04:19	PM	1,184,984	W57642432.dbf
03/26/2006	04:19	PM	407	W57642432.prj
03/26/2006	04:19	PM	14,388	W57642432.sbn
03/26/2006	04:19	PM	1,092	W57642432.sbx
03/26/2006	04:19	PM	23,887,692	W57642432.shp
03/26/2006	04:19	PM	11,356	W57642432.shx
03/26/2006	04:19	PM	632,632	W57642436.dbf
03/26/2006	04:19	PM	407	W57642436.prj
03/26/2006	04:19	PM	7,692	W57642436.sbn
03/26/2006	04:19	PM	668	W57642436.sbx
03/26/2006	04:19	PM	10,673,964	W57642436.shp
03/26/2006	04:19	PM	6,108	W57642436.shx
03/26/2006	04:19	PM	667,154	W57642440.dbf
03/26/2006	04:19	PM	407	W57642440.prj
03/26/2006	04:19	PM	8,068	W57642440.sbn
03/26/2006	04:19	PM	748	W57642440.sbx
03/26/2006	04:19	PM	11,344,420	W57642440.shp
03/26/2006	04:19	PM	6,436	W57642440.shx
03/26/2006	04:19	PM	560,220	W57642444.dbf
03/26/2006	04:19	PM	407	W57642444.prj
03/26/2006	04:19	PM	7,116	W57642444.sbn
03/26/2006	04:19	PM	780	W57642444.sbx
03/26/2006	04:19	PM	7,603,932	W57642444.shp
03/26/2006	04:19	PM	5,420	W57642444.shx
03/26/2006	04:19	PM	683,994	W57642448.dbf
03/26/2006	04:19	PM	407	W57642448.prj
03/26/2006	04:20	PM	8,244	W57642448.sbn
03/26/2006	04:20	PM	732	W57642448.sbx
03/26/2006	04:19	PM	10,228,388	W57642448.shp
03/26/2006	04:19	PM	6,596	W57642448.shx
03/26/2006	04:20	PM	396,872	W57642452.dbf
03/26/2006	04:20	PM	407	W57642452.prj
03/26/2006	04:20	PM	4,764	W57642452.sbn
03/26/2006	04:20	PM	492	W57642452.sbx
03/26/2006	04:20	PM	5,862,732	W57642452.shp
03/26/2006	04:20	PM	3,868	W57642452.shx
03/26/2006	04:20	PM	527,382	W57642456.dbf
03/26/2006	04:20	PM	407	W57642456.prj
03/26/2006	04:20	PM	6,804	W57642456.sbn
03/26/2006	04:20	PM	780	W57642456.sbx
03/26/2006	04:20	PM	6,146,900	W57642456.shp
03/26/2006	04:20	PM	5,108	W57642456.shx
03/26/2006	04:20	PM	836,396	W57642460.dbf
03/26/2006	04:20	PM	407	W57642460.prj
03/26/2006	04:20	PM	9,932	W57642460.sbn
03/26/2006	04:20	PM	972	W57642460.sbx
03/26/2006	04:20	PM	11,461,692	W57642460.shp
03/26/2006	04:20	PM	8,044	W57642460.shx
03/26/2006	04:20	PM	619,160	W57642464.dbf
03/26/2006	04:20	PM	407	W57642464.prj
03/26/2006	04:20	PM	7,668	W57642464.sbn
03/26/2006	04:20	PM	772	W57642464.sbx

WAIMAKARIRI DISTRICT COUNCIL AND ENVIRONMENT CANTERBURY

03/26/2006	04:20	PM	13,813,516	W57642464.shp
03/26/2006	04:20	PM	5,980	W57642464.shx
03/26/2006	04:20	PM	454,128	W57642468.dbf
03/26/2006	04:20	PM	407	W57642468.prj
03/26/2006	04:20	PM	6,012	W57642468.sbn
03/26/2006	04:20	PM	716	W57642468.sbx
03/26/2006	04:20	PM	6,965,100	W57642468.shp
03/26/2006	04:20	PM	4,412	W57642468.shx
03/26/2006	04:20	PM	556,852	W57642472.dbf
03/26/2006	04:20	PM	407	W57642472.prj
03/26/2006	04:20	PM	7,124	W57642472.sbn
03/26/2006	04:20	PM	820	W57642472.sbx
03/26/2006	04:20	PM	6,210,396	W57642472.shp
03/26/2006	04:20	PM	5,388	W57642472.shx
03/26/2006	04:20	PM	996,376	W57642476.dbf
03/26/2006	04:20	PM	407	W57642476.prj
03/26/2006	04:20	PM	13,108	W57642476.sbn
03/26/2006	04:20	PM	1,604	W57642476.sbx
03/26/2006	04:20	PM	9,141,516	W57642476.shp
03/26/2006	04:20	PM	9,564	W57642476.shx
03/26/2006	04:20	PM	797,664	W57642480.dbf
03/26/2006	04:20	PM	407	W57642480.prj
03/26/2006	04:20	PM	9,548	W57642480.sbn
03/26/2006	04:20	PM	956	W57642480.sbx
03/26/2006	04:20	PM	7,022,540	W57642480.shp
03/26/2006	04:20	PM	7,676	W57642480.shx
03/26/2006	04:20	PM	3,006,230	W57642484.dbf
03/26/2006	04:20	PM	407	W57642484.prj
03/26/2006	04:20	PM	35,580	W57642484.sbn
03/26/2006	04:20	PM	2,964	W57642484.sbx
03/26/2006	04:20	PM	19,620,788	W57642484.shp
03/26/2006	04:20	PM	28,660	W57642484.shx
03/26/2006	04:20	PM	852,394	W57682424.dbf
03/26/2006	04:20	PM	407	W57682424.prj
03/26/2006	04:20	PM	9,532	W57682424.sbn
03/26/2006	04:20	PM	500	W57682424.sbx
03/26/2006	04:20	PM	19,266,244	W57682424.shp
03/26/2006	04:20	PM	8,196	W57682424.shx
03/26/2006	04:21	PM	1,713,760	W57682428.dbf
03/26/2006	04:20	PM	407	W57682428.prj
03/26/2006	04:21	PM	19,516	W57682428.sbn
03/26/2006	04:21	PM	1,228	W57682428.sbx
03/26/2006	04:21	PM	52,781,932	W57682428.shp
03/26/2006	04:21	PM	16,380	W57682428.shx
03/26/2006	04:21	PM	2,154,968	W57682432.dbf
03/26/2006	04:21	PM	407	W57682432.prj
03/26/2006	04:21	PM	26,060	W57682432.sbn
03/26/2006	04:21	PM	1,500	W57682432.sbx
03/26/2006	04:21	PM	76,385,644	W57682432.shp
03/26/2006	04:21	PM	20,572	W57682432.shx
03/26/2006	04:21	PM	1,655,662	W57682436.dbf
03/26/2006	04:21	PM	407	W57682436.prj
03/26/2006	04:21	PM	18,748	W57682436.sbn
03/26/2006	04:21	PM	980	W57682436.sbx
03/26/2006	04:21	PM	63,574,260	W57682436.shp
03/26/2006	04:21	PM	15,828	W57682436.shx
03/26/2006	04:22	PM	2,682,902	W57682440.dbf
03/26/2006	04:21	PM	407	W57682440.prj
03/26/2006	04:22	PM	31,108	W57682440.sbn
03/26/2006	04:22	PM	1,532	W57682440.sbx
03/26/2006	04:22	PM	121,256,020	W57682440.shp
03/26/2006	04:22	PM	25,588	W57682440.shx
03/26/2006	04:22	PM	1,117,624	W57682444.dbf
03/26/2006	04:22	PM	407	W57682444.prj

WAIMAKARIRI DISTRICT COUNCIL AND ENVIRONMENT CANTERBURY

03/26/2006	04:22	PM	13,604	W57682444.sbn
03/26/2006	04:22	PM	948	W57682444.sbx
03/26/2006	04:22	PM	41,825,004	W57682444.shp
03/26/2006	04:22	PM	10,716	W57682444.shx
03/26/2006	04:23	PM	718,516	W57682448.dbf
03/26/2006	04:22	PM	407	W57682448.prj
03/26/2006	04:23	PM	8,444	W57682448.sbn
03/26/2006	04:23	PM	604	W57682448.sbx
03/26/2006	04:23	PM	9,994,460	W57682448.shp
03/26/2006	04:23	PM	6,924	W57682448.shx
03/26/2006	04:23	PM	436,446	W57682452.dbf
03/26/2006	04:23	PM	407	W57682452.prj
03/26/2006	04:23	PM	5,788	W57682452.sbn
03/26/2006	04:23	PM	628	W57682452.sbx
03/26/2006	04:23	PM	6,321,044	W57682452.shp
03/26/2006	04:23	PM	4,244	W57682452.shx
03/26/2006	04:23	PM	1,364,330	W57682456.dbf
03/26/2006	04:23	PM	407	W57682456.prj
03/26/2006	04:23	PM	16,100	W57682456.sbn
03/26/2006	04:23	PM	1,116	W57682456.sbx
03/26/2006	04:23	PM	55,981,668	W57682456.shp
03/26/2006	04:23	PM	13,060	W57682456.shx
03/26/2006	04:23	PM	1,699,446	W57682460.dbf
03/26/2006	04:23	PM	407	W57682460.prj
03/26/2006	04:23	PM	19,492	W57682460.sbn
03/26/2006	04:23	PM	1,308	W57682460.sbx
03/26/2006	04:23	PM	58,307,476	W57682460.shp
03/26/2006	04:23	PM	16,244	W57682460.shx
03/26/2006	04:23	PM	1,313,810	W57682464.dbf
03/26/2006	04:23	PM	407	W57682464.prj
03/26/2006	04:23	PM	15,988	W57682464.sbn
03/26/2006	04:23	PM	1,468	W57682464.sbx
03/26/2006	04:23	PM	30,506,372	W57682464.shp
03/26/2006	04:23	PM	12,580	W57682464.shx
03/26/2006	04:24	PM	1,165,618	W57682468.dbf
03/26/2006	04:23	PM	407	W57682468.prj
03/26/2006	04:24	PM	14,516	W57682468.sbn
03/26/2006	04:24	PM	1,404	W57682468.sbx
03/26/2006	04:24	PM	18,764,420	W57682468.shp
03/26/2006	04:24	PM	11,172	W57682468.shx
03/26/2006	04:24	PM	1,285,182	W57682472.dbf
03/26/2006	04:24	PM	407	W57682472.prj
03/26/2006	04:24	PM	15,748	W57682472.sbn
03/26/2006	04:24	PM	1,500	W57682472.sbx
03/26/2006	04:24	PM	20,116,884	W57682472.shp
03/26/2006	04:24	PM	12,308	W57682472.shx
03/26/2006	04:24	PM	1,659,872	W57682476.dbf
03/26/2006	04:24	PM	407	W57682476.prj
03/26/2006	04:24	PM	19,516	W57682476.sbn
03/26/2006	04:24	PM	1,708	W57682476.sbx
03/26/2006	04:24	PM	21,449,132	W57682476.shp
03/26/2006	04:24	PM	15,868	W57682476.shx
03/26/2006	04:24	PM	1,101,626	W57682480.dbf
03/26/2006	04:24	PM	407	W57682480.prj
03/26/2006	04:24	PM	14,212	W57682480.sbn
03/26/2006	04:24	PM	1,708	W57682480.sbx
03/26/2006	04:24	PM	14,682,756	W57682480.shp
03/26/2006	04:24	PM	10,564	W57682480.shx
03/26/2006	04:24	PM	1,854,374	W57682484.dbf
03/26/2006	04:24	PM	407	W57682484.prj
03/26/2006	04:24	PM	24,452	W57682484.sbn
03/26/2006	04:24	PM	2,748	W57682484.sbx
03/26/2006	04:24	PM	15,817,844	W57682484.shp
03/26/2006	04:24	PM	17,716	W57682484.shx

WAIMAKARIRI DISTRICT COUNCIL AND ENVIRONMENT CANTERBURY

03/26/2006	04:24	PM	49,126	W57682488.dbf
03/26/2006	04:24	PM	407	W57682488.prj
03/26/2006	04:24	PM	748	W57682488.sbn
03/26/2006	04:24	PM	164	W57682488.sbx
03/26/2006	04:24	PM	118,740	W57682488.shp
03/26/2006	04:24	PM	564	W57682488.shx
03/26/2006	04:24	PM	1,391,274	W57722444.dbf
03/26/2006	04:24	PM	407	W57722444.prj
03/26/2006	04:24	PM	15,996	W57722444.sbn
03/26/2006	04:24	PM	740	W57722444.sbx
03/26/2006	04:24	PM	25,817,572	W57722444.shp
03/26/2006	04:24	PM	13,316	W57722444.shx
03/26/2006	04:25	PM	1,835,850	W57722448.dbf
03/26/2006	04:24	PM	407	W57722448.prj
03/26/2006	04:25	PM	22,796	W57722448.sbn
03/26/2006	04:25	PM	1,428	W57722448.sbx
03/26/2006	04:25	PM	40,681,220	W57722448.shp
03/26/2006	04:25	PM	17,540	W57722448.shx
03/26/2006	04:25	PM	1,084,786	W57722452.dbf
03/26/2006	04:25	PM	407	W57722452.prj
03/26/2006	04:25	PM	13,420	W57722452.sbn
03/26/2006	04:25	PM	1,108	W57722452.sbx
03/26/2006	04:25	PM	30,242,148	W57722452.shp
03/26/2006	04:25	PM	10,404	W57722452.shx
03/26/2006	04:25	PM	1,049,422	W57722456.dbf
03/26/2006	04:25	PM	407	W57722456.prj
03/26/2006	04:25	PM	13,268	W57722456.sbn
03/26/2006	04:25	PM	1,260	W57722456.sbx
03/26/2006	04:25	PM	20,303,668	W57722456.shp
03/26/2006	04:25	PM	10,068	W57722456.shx
03/26/2006	04:25	PM	1,096,574	W57722460.dbf
03/26/2006	04:25	PM	407	W57722460.prj
03/26/2006	04:25	PM	13,676	W57722460.sbn
03/26/2006	04:25	PM	1,220	W57722460.sbx
03/26/2006	04:25	PM	14,440,340	W57722460.shp
03/26/2006	04:25	PM	10,516	W57722460.shx
03/26/2006	04:25	PM	1,158,882	W57722464.dbf
03/26/2006	04:25	PM	407	W57722464.prj
03/26/2006	04:25	PM	14,332	W57722464.sbn
03/26/2006	04:25	PM	1,284	W57722464.sbx
03/26/2006	04:25	PM	17,206,724	W57722464.shp
03/26/2006	04:25	PM	11,108	W57722464.shx
03/26/2006	04:25	PM	789,244	W57722468.dbf
03/26/2006	04:25	PM	407	W57722468.prj
03/26/2006	04:25	PM	9,324	W57722468.sbn
03/26/2006	04:25	PM	812	W57722468.sbx
03/26/2006	04:25	PM	13,076,348	W57722468.shp
03/26/2006	04:25	PM	7,596	W57722468.shx
03/26/2006	04:26	PM	2,684,586	W57722472.dbf
03/26/2006	04:25	PM	407	W57722472.prj
03/26/2006	04:26	PM	31,492	W57722472.sbn
03/26/2006	04:26	PM	1,900	W57722472.sbx
03/26/2006	04:26	PM	103,853,284	W57722472.shp
03/26/2006	04:26	PM	25,604	W57722472.shx
03/26/2006	04:26	PM	2,192,016	W57722476.dbf
03/26/2006	04:26	PM	407	W57722476.prj
03/26/2006	04:26	PM	26,404	W57722476.sbn
03/26/2006	04:26	PM	1,492	W57722476.sbx
03/26/2006	04:26	PM	56,573,708	W57722476.shp
03/26/2006	04:26	PM	20,924	W57722476.shx
03/26/2006	04:26	PM	779,140	W57722480.dbf
03/26/2006	04:26	PM	407	W57722480.prj
03/26/2006	04:26	PM	9,196	W57722480.sbn
03/26/2006	04:26	PM	780	W57722480.sbx

WAIMAKARIRI DISTRICT COUNCIL AND ENVIRONMENT CANTERBURY

03/26/2006	04:26	PM	18,451,868	W57722480.shp
03/26/2006	04:26	PM	7,500	W57722480.shx
03/26/2006	04:26	PM	1,285,182	W57722484.dbf
03/26/2006	04:26	PM	407	W57722484.prj
03/26/2006	04:26	PM	15,796	W57722484.sbn
03/26/2006	04:26	PM	1,548	W57722484.sbx
03/26/2006	04:26	PM	11,825,108	W57722484.shp
03/26/2006	04:26	PM	12,308	W57722484.shx
03/26/2006	04:27	PM	801,032	W57722488.dbf
03/26/2006	04:26	PM	407	W57722488.prj
03/26/2006	04:27	PM	9,356	W57722488.sbn
03/26/2006	04:27	PM	732	W57722488.sbx
03/26/2006	04:27	PM	4,896,556	W57722488.shp
03/26/2006	04:27	PM	7,708	W57722488.shx
03/26/2006	04:27	PM	2,298,108	W57762448.dbf
03/26/2006	04:27	PM	407	W57762448.prj
03/26/2006	04:27	PM	26,820	W57762448.sbn
03/26/2006	04:27	PM	900	W57762448.sbx
03/26/2006	04:27	PM	43,100,444	W57762448.shp
03/26/2006	04:27	PM	21,932	W57762448.shx
03/26/2006	04:27	PM	1,789,540	W57762452.dbf
03/26/2006	04:27	PM	407	W57762452.prj
03/26/2006	04:27	PM	22,524	W57762452.sbn
03/26/2006	04:27	PM	1,436	W57762452.sbx
03/26/2006	04:27	PM	35,827,132	W57762452.shp
03/26/2006	04:27	PM	17,100	W57762452.shx
03/26/2006	04:27	PM	1,876,266	W57762456.dbf
03/26/2006	04:27	PM	407	W57762456.prj
03/26/2006	04:27	PM	23,356	W57762456.sbn
03/26/2006	04:27	PM	1,444	W57762456.sbx
03/26/2006	04:27	PM	55,175,140	W57762456.shp
03/26/2006	04:27	PM	17,924	W57762456.shx
03/26/2006	04:28	PM	1,145,410	W57762460.dbf
03/26/2006	04:27	PM	407	W57762460.prj
03/26/2006	04:28	PM	13,836	W57762460.sbn
03/26/2006	04:28	PM	916	W57762460.sbx
03/26/2006	04:28	PM	37,086,052	W57762460.shp
03/26/2006	04:28	PM	10,980	W57762460.shx
03/26/2006	04:28	PM	1,031,740	W57762464.dbf
03/26/2006	04:28	PM	407	W57762464.prj
03/26/2006	04:28	PM	12,860	W57762464.sbn
03/26/2006	04:28	PM	1,180	W57762464.sbx
03/26/2006	04:28	PM	26,882,652	W57762464.shp
03/26/2006	04:28	PM	9,900	W57762464.shx
03/26/2006	04:28	PM	1,040,160	W57762468.dbf
03/26/2006	04:28	PM	407	W57762468.prj
03/26/2006	04:28	PM	12,924	W57762468.sbn
03/26/2006	04:28	PM	1,036	W57762468.sbx
03/26/2006	04:28	PM	30,755,468	W57762468.shp
03/26/2006	04:28	PM	9,980	W57762468.shx
03/26/2006	04:29	PM	3,607,418	W57762472.dbf
03/26/2006	04:28	PM	407	W57762472.prj
03/26/2006	04:29	PM	44,636	W57762472.sbn
03/26/2006	04:29	PM	2,180	W57762472.sbx
03/26/2006	04:29	PM	162,582,276	W57762472.shp
03/26/2006	04:29	PM	34,372	W57762472.shx
03/26/2006	04:30	PM	3,335,452	W57762476.dbf
03/26/2006	04:29	PM	407	W57762476.prj
03/26/2006	04:30	PM	37,588	W57762476.sbn
03/26/2006	04:30	PM	1,812	W57762476.sbx
03/26/2006	04:30	PM	117,644,284	W57762476.shp
03/26/2006	04:30	PM	31,788	W57762476.shx
03/26/2006	04:30	PM	623,370	W57762480.dbf
03/26/2006	04:30	PM	407	W57762480.prj

WAIMAKARIRI DISTRICT COUNCIL AND ENVIRONMENT CANTERBURY

03/26/2006	04:30	PM	7,580	W57762480.sbn
03/26/2006	04:30	PM	644	W57762480.sbx
03/26/2006	04:30	PM	14,819,396	W57762480.shp
03/26/2006	04:30	PM	6,020	W57762480.shx
03/26/2006	04:30	PM	263,836	W57762484.dbf
03/26/2006	04:30	PM	407	W57762484.prj
03/26/2006	04:30	PM	3,388	W57762484.sbn
03/26/2006	04:30	PM	380	W57762484.sbx
03/26/2006	04:30	PM	3,179,484	W57762484.shp
03/26/2006	04:30	PM	2,604	W57762484.shx
03/26/2006	04:30	PM	35,654	W57762488.dbf
03/26/2006	04:30	PM	407	W57762488.prj
03/26/2006	04:30	PM	540	W57762488.sbn
03/26/2006	04:30	PM	148	W57762488.sbx
03/26/2006	04:30	PM	60,148	W57762488.shp
03/26/2006	04:30	PM	436	W57762488.shx
03/26/2006	04:30	PM	1,163,934	W57802456.dbf
03/26/2006	04:30	PM	407	W57802456.prj
03/26/2006	04:30	PM	13,852	W57802456.sbn
03/26/2006	04:30	PM	756	W57802456.sbx
03/26/2006	04:30	PM	34,703,220	W57802456.shp
03/26/2006	04:30	PM	11,156	W57802456.shx
03/26/2006	04:30	PM	2,178,544	W57802460.dbf
03/26/2006	04:30	PM	407	W57802460.prj
03/26/2006	04:30	PM	26,356	W57802460.sbn
03/26/2006	04:30	PM	1,604	W57802460.sbx
03/26/2006	04:30	PM	78,961,804	W57802460.shp
03/26/2006	04:30	PM	20,796	W57802460.shx
03/26/2006	04:31	PM	2,218,118	W57802464.dbf
03/26/2006	04:30	PM	407	W57802464.prj
03/26/2006	04:31	PM	26,548	W57802464.sbn
03/26/2006	04:31	PM	1,388	W57802464.sbx
03/26/2006	04:31	PM	87,197,268	W57802464.shp
03/26/2006	04:31	PM	21,172	W57802464.shx
03/26/2006	04:31	PM	1,695,236	W57802468.dbf
03/26/2006	04:31	PM	407	W57802468.prj
03/26/2006	04:31	PM	19,132	W57802468.sbn
03/26/2006	04:31	PM	988	W57802468.sbx
03/26/2006	04:31	PM	43,594,396	W57802468.shp
03/26/2006	04:31	PM	16,204	W57802468.shx
03/26/2006	04:16	PM	515,594	W57842460.dbf
03/26/2006	04:16	PM	407	W57842460.prj
03/26/2006	04:16	PM	6,268	W57842460.sbn
03/26/2006	04:16	PM	356	W57842460.sbx
03/26/2006	04:16	PM	5,222,116	W57842460.shp
03/26/2006	04:16	PM	4,996	W57842460.shx
07/19/2006	07:41	PM	1,895,048	W57482452.lst
07/19/2006	07:41	PM	4,678,569	W57482454.lst
07/19/2006	07:41	PM	21,188,345	W57502446.lst
07/19/2006	07:41	PM	48,540,141	W57502448.lst
07/19/2006	07:42	PM	73,080,853	W57502450.lst
07/19/2006	07:42	PM	80,422,133	W57502452.lst
07/19/2006	07:43	PM	82,398,633	W57502454.lst
07/19/2006	07:43	PM	80,918,480	W57502456.lst
07/19/2006	07:44	PM	75,231,039	W57502458.lst
07/19/2006	07:44	PM	59,301,674	W57502460.lst
07/19/2006	07:44	PM	56,274,184	W57502462.lst
07/19/2006	07:45	PM	31,608,678	W57502464.lst
07/19/2006	07:45	PM	18,575,996	W57502466.lst
07/19/2006	07:45	PM	5,678,965	W57502468.lst
07/19/2006	07:45	PM	15,921	W57502470.lst
07/19/2006	07:45	PM	16,405,076	W57522442.lst
07/19/2006	07:45	PM	65,105,710	W57522444.lst
07/19/2006	07:46	PM	88,648,032	W57522446.lst

Last Pulse Returns

WAIMAKARIRI DISTRICT COUNCIL AND ENVIRONMENT CANTERBURY

07/19/2006	07:46	PM	89,088,739	W57522448.lst
07/19/2006	07:47	PM	85,833,670	W57522450.lst
07/19/2006	07:48	PM	82,493,753	W57522452.lst
07/19/2006	07:48	PM	81,524,211	W57522454.lst
07/19/2006	07:49	PM	79,620,550	W57522456.lst
07/19/2006	07:49	PM	80,651,776	W57522458.lst
07/19/2006	07:50	PM	80,853,833	W57522460.lst
07/19/2006	07:50	PM	80,874,061	W57522462.lst
07/19/2006	07:51	PM	83,941,007	W57522464.lst
07/19/2006	07:51	PM	84,768,941	W57522466.lst
07/19/2006	07:52	PM	88,021,755	W57522468.lst
07/19/2006	07:52	PM	90,209,454	W57522470.lst
07/19/2006	07:53	PM	57,160,221	W57522472.lst
07/19/2006	07:53	PM	43,324,279	W57522474.lst
07/19/2006	07:53	PM	27,765,878	W57522476.lst
07/19/2006	07:53	PM	10,903,272	W57522478.lst
07/19/2006	07:53	PM	7,392,523	W57542438.lst
07/19/2006	07:54	PM	51,487,436	W57542440.lst
07/19/2006	07:54	PM	84,496,734	W57542442.lst
07/19/2006	07:55	PM	82,303,806	W57542444.lst
07/19/2006	07:55	PM	81,661,816	W57542446.lst
07/19/2006	07:56	PM	83,258,774	W57542448.lst
07/19/2006	07:56	PM	84,782,112	W57542450.lst
07/19/2006	07:57	PM	85,581,831	W57542452.lst
07/19/2006	07:57	PM	86,200,713	W57542454.lst
07/19/2006	07:58	PM	86,780,062	W57542456.lst
07/19/2006	07:59	PM	83,221,937	W57542458.lst
07/19/2006	07:59	PM	79,985,534	W57542460.lst
07/19/2006	08:00	PM	78,512,360	W57542462.lst
07/19/2006	08:00	PM	78,360,098	W57542464.lst
07/19/2006	08:01	PM	80,592,918	W57542466.lst
07/19/2006	08:01	PM	81,656,024	W57542468.lst
07/19/2006	08:02	PM	95,248,961	W57542470.lst
07/19/2006	08:02	PM	84,097,466	W57542472.lst
07/19/2006	08:03	PM	71,519,774	W57542474.lst
07/19/2006	08:03	PM	71,562,171	W57542476.lst
07/19/2006	08:04	PM	68,992,364	W57542478.lst
07/19/2006	08:04	PM	47,747,865	W57542480.lst
07/19/2006	08:04	PM	9,803,939	W57542482.lst
07/19/2006	08:04	PM	21,104,614	W57562436.lst
07/19/2006	08:05	PM	80,285,670	W57562438.lst
07/19/2006	08:05	PM	88,459,444	W57562440.lst
07/19/2006	08:06	PM	89,570,132	W57562442.lst
07/19/2006	08:06	PM	86,608,324	W57562444.lst
07/19/2006	08:07	PM	82,518,042	W57562446.lst
07/19/2006	08:07	PM	82,329,053	W57562448.lst
07/19/2006	08:08	PM	82,555,283	W57562450.lst
07/19/2006	08:08	PM	83,310,641	W57562452.lst
07/19/2006	08:09	PM	84,162,293	W57562454.lst
07/19/2006	08:10	PM	84,768,141	W57562456.lst
07/19/2006	08:10	PM	86,154,277	W57562458.lst
07/19/2006	08:11	PM	86,377,564	W57562460.lst
07/19/2006	08:11	PM	84,824,974	W57562462.lst
07/19/2006	08:12	PM	83,425,162	W57562464.lst
07/19/2006	08:12	PM	81,400,283	W57562466.lst
07/19/2006	08:13	PM	80,876,907	W57562468.lst
07/19/2006	08:13	PM	79,189,829	W57562470.lst
07/19/2006	08:14	PM	80,463,891	W57562472.lst
07/19/2006	08:14	PM	87,981,443	W57562474.lst
07/19/2006	08:15	PM	82,208,658	W57562476.lst
07/19/2006	08:15	PM	79,868,487	W57562478.lst
07/19/2006	08:16	PM	70,617,230	W57562480.lst
07/19/2006	08:16	PM	62,694,126	W57562482.lst
07/19/2006	08:16	PM	20,005,753	W57562484.lst

WAIMAKARIRI DISTRICT COUNCIL AND ENVIRONMENT CANTERBURY

07/19/2006	08:16	PM	7,185,412	W57562486.lst
07/19/2006	08:16	PM	50,406	W57582432.lst
07/19/2006	08:17	PM	33,007,028	W57582434.lst
07/19/2006	08:17	PM	82,738,379	W57582436.lst
07/19/2006	08:18	PM	84,694,168	W57582438.lst
07/19/2006	08:18	PM	85,138,178	W57582440.lst
07/19/2006	08:19	PM	85,578,301	W57582442.lst
07/19/2006	08:19	PM	89,079,339	W57582444.lst
07/19/2006	08:20	PM	87,992,950	W57582446.lst
07/19/2006	08:20	PM	88,358,042	W57582448.lst
07/19/2006	08:21	PM	87,157,916	W57582450.lst
07/19/2006	08:22	PM	84,880,168	W57582452.lst
07/19/2006	08:22	PM	84,185,511	W57582454.lst
07/19/2006	08:23	PM	81,949,575	W57582456.lst
07/19/2006	08:23	PM	83,061,993	W57582458.lst
07/19/2006	08:24	PM	83,997,405	W57582460.lst
07/19/2006	08:24	PM	83,762,578	W57582462.lst
07/19/2006	08:25	PM	84,297,409	W57582464.lst
07/19/2006	08:25	PM	85,308,165	W57582466.lst
07/19/2006	08:26	PM	87,247,352	W57582468.lst
07/19/2006	08:26	PM	84,874,635	W57582470.lst
07/19/2006	08:27	PM	83,490,046	W57582472.lst
07/19/2006	08:27	PM	81,087,379	W57582474.lst
07/19/2006	08:28	PM	79,265,195	W57582476.lst
07/19/2006	08:29	PM	112,055,135	W57582478.lst
07/19/2006	08:30	PM	133,845,809	W57582480.lst
07/19/2006	08:30	PM	95,484,253	W57582482.lst
07/19/2006	08:31	PM	74,966,792	W57582484.lst
07/19/2006	08:31	PM	27,281,542	W57582486.lst
07/19/2006	08:31	PM	3,609,353	W57602430.lst
07/19/2006	08:31	PM	56,629,468	W57602432.lst
07/19/2006	08:32	PM	87,513,053	W57602434.lst
07/19/2006	08:32	PM	89,235,817	W57602436.lst
07/19/2006	08:33	PM	85,062,852	W57602438.lst
07/19/2006	08:33	PM	83,711,729	W57602440.lst
07/19/2006	08:34	PM	82,428,315	W57602442.lst
07/19/2006	08:34	PM	84,307,594	W57602444.lst
07/19/2006	08:35	PM	84,123,883	W57602446.lst
07/19/2006	08:36	PM	83,676,538	W57602448.lst
07/19/2006	08:36	PM	85,148,916	W57602450.lst
07/19/2006	08:37	PM	84,076,819	W57602452.lst
07/19/2006	08:37	PM	82,450,847	W57602454.lst
07/19/2006	08:38	PM	82,895,465	W57602456.lst
07/19/2006	08:38	PM	81,777,208	W57602458.lst
07/19/2006	08:39	PM	80,776,301	W57602460.lst
07/19/2006	08:39	PM	79,289,634	W57602462.lst
07/19/2006	08:40	PM	76,950,934	W57602464.lst
07/19/2006	08:40	PM	78,018,177	W57602466.lst
07/19/2006	08:41	PM	81,530,203	W57602468.lst
07/19/2006	08:41	PM	81,828,930	W57602470.lst
07/19/2006	08:42	PM	82,170,559	W57602472.lst
07/19/2006	08:42	PM	82,410,524	W57602474.lst
07/19/2006	08:43	PM	82,956,583	W57602476.lst
07/19/2006	08:43	PM	99,369,660	W57602478.lst
07/19/2006	08:44	PM	136,200,281	W57602480.lst
07/19/2006	08:45	PM	89,665,876	W57602482.lst
07/19/2006	08:45	PM	78,529,529	W57602484.lst
07/19/2006	08:46	PM	27,958,929	W57602486.lst
07/19/2006	08:46	PM	10,368,508	W57622428.lst
07/19/2006	08:46	PM	69,294,073	W57622430.lst
07/19/2006	08:47	PM	82,443,833	W57622432.lst
07/19/2006	08:47	PM	83,985,728	W57622434.lst
07/19/2006	08:48	PM	85,695,461	W57622436.lst
07/19/2006	08:48	PM	85,780,545	W57622438.lst

WAIMAKARIRI DISTRICT COUNCIL AND ENVIRONMENT CANTERBURY

07/19/2006	08:49	PM	89,219,247	W57622440.lst
07/19/2006	08:49	PM	87,688,110	W57622442.lst
07/19/2006	08:50	PM	87,762,348	W57622444.lst
07/19/2006	08:50	PM	83,847,306	W57622446.lst
07/19/2006	08:51	PM	82,341,770	W57622448.lst
07/19/2006	08:51	PM	82,561,396	W57622450.lst
07/19/2006	08:52	PM	79,983,481	W57622452.lst
07/19/2006	08:52	PM	82,052,995	W57622454.lst
07/19/2006	08:53	PM	83,608,309	W57622456.lst
07/19/2006	08:53	PM	86,039,535	W57622458.lst
07/19/2006	08:54	PM	86,239,754	W57622460.lst
07/19/2006	08:55	PM	85,088,374	W57622462.lst
07/19/2006	08:55	PM	82,356,539	W57622464.lst
07/19/2006	08:56	PM	81,789,424	W57622466.lst
07/19/2006	08:56	PM	80,752,296	W57622468.lst
07/19/2006	08:57	PM	79,821,387	W57622470.lst
07/19/2006	08:57	PM	80,134,110	W57622472.lst
07/19/2006	08:58	PM	81,212,572	W57622474.lst
07/19/2006	08:58	PM	84,436,869	W57622476.lst
07/19/2006	08:59	PM	92,547,481	W57622478.lst
07/19/2006	09:00	PM	155,458,624	W57622480.lst
07/19/2006	09:01	PM	105,384,134	W57622482.lst
07/19/2006	09:01	PM	82,031,390	W57622484.lst
07/19/2006	09:01	PM	28,828,362	W57622486.lst
07/19/2006	09:01	PM	9,697,933	W57642426.lst
07/19/2006	09:02	PM	82,859,256	W57642428.lst
07/19/2006	09:02	PM	87,729,294	W57642430.lst
07/19/2006	09:03	PM	85,990,567	W57642432.lst
07/19/2006	09:03	PM	84,391,872	W57642434.lst
07/19/2006	09:04	PM	84,862,325	W57642436.lst
07/19/2006	09:05	PM	85,438,085	W57642438.lst
07/19/2006	09:05	PM	84,459,264	W57642440.lst
07/19/2006	09:06	PM	85,346,805	W57642442.lst
07/19/2006	09:06	PM	87,917,392	W57642444.lst
07/19/2006	09:07	PM	86,409,561	W57642446.lst
07/19/2006	09:07	PM	88,254,851	W57642448.lst
07/19/2006	09:08	PM	88,115,044	W57642450.lst
07/19/2006	09:08	PM	85,905,304	W57642452.lst
07/19/2006	09:09	PM	83,235,435	W57642454.lst
07/19/2006	09:09	PM	82,323,603	W57642456.lst
07/19/2006	09:10	PM	81,558,528	W57642458.lst
07/19/2006	09:10	PM	83,229,406	W57642460.lst
07/19/2006	09:11	PM	86,015,006	W57642462.lst
07/19/2006	09:11	PM	84,788,668	W57642464.lst
07/19/2006	09:12	PM	84,632,139	W57642466.lst
07/19/2006	09:13	PM	85,047,664	W57642468.lst
07/19/2006	09:13	PM	83,362,556	W57642470.lst
07/19/2006	09:14	PM	82,709,379	W57642472.lst
07/19/2006	09:14	PM	79,934,655	W57642474.lst
07/19/2006	09:15	PM	79,600,233	W57642476.lst
07/19/2006	09:15	PM	78,406,372	W57642478.lst
07/19/2006	09:16	PM	147,332,910	W57642480.lst
07/19/2006	09:17	PM	128,388,087	W57642482.lst
07/19/2006	09:17	PM	77,161,195	W57642484.lst
07/19/2006	09:18	PM	38,478,622	W57642486.lst
07/19/2006	09:18	PM	73,728,217	W57662426.lst
07/19/2006	09:19	PM	123,626,470	W57662428.lst
07/19/2006	09:20	PM	124,461,237	W57662430.lst
07/19/2006	09:20	PM	121,610,076	W57662432.lst
07/19/2006	09:21	PM	107,422,230	W57662434.lst
07/19/2006	09:22	PM	93,662,871	W57662436.lst
07/19/2006	09:22	PM	85,719,286	W57662438.lst
07/19/2006	09:23	PM	80,455,543	W57662440.lst
07/19/2006	09:23	PM	81,764,420	W57662442.lst

WAIMAKARIRI DISTRICT COUNCIL AND ENVIRONMENT CANTERBURY

07/19/2006	09:24	PM	79,589,799	W57662444.lst
07/19/2006	09:24	PM	82,421,668	W57662446.lst
07/19/2006	09:25	PM	84,344,072	W57662448.lst
07/19/2006	09:25	PM	85,491,105	W57662450.lst
07/19/2006	09:26	PM	87,608,987	W57662452.lst
07/19/2006	09:26	PM	88,074,532	W57662454.lst
07/19/2006	09:27	PM	88,213,201	W57662456.lst
07/19/2006	09:27	PM	87,628,732	W57662458.lst
07/19/2006	09:28	PM	86,681,240	W57662460.lst
07/19/2006	09:29	PM	85,019,870	W57662462.lst
07/19/2006	09:29	PM	84,472,953	W57662464.lst
07/19/2006	09:30	PM	82,926,408	W57662466.lst
07/19/2006	09:30	PM	82,605,742	W57662468.lst
07/19/2006	09:31	PM	83,740,820	W57662470.lst
07/19/2006	09:31	PM	84,950,309	W57662472.lst
07/19/2006	09:32	PM	83,726,222	W57662474.lst
07/19/2006	09:32	PM	83,426,588	W57662476.lst
07/19/2006	09:33	PM	84,498,644	W57662478.lst
07/19/2006	09:34	PM	145,031,354	W57662480.lst
07/19/2006	09:35	PM	151,634,343	W57662482.lst
07/19/2006	09:35	PM	104,597,524	W57662484.lst
07/19/2006	09:36	PM	61,745,594	W57662486.lst
07/19/2006	09:36	PM	25,005,550	W57682424.lst
07/19/2006	09:37	PM	163,968,674	W57682426.lst
07/19/2006	09:38	PM	164,361,270	W57682428.lst
07/19/2006	09:39	PM	162,657,543	W57682430.lst
07/19/2006	09:40	PM	166,247,790	W57682432.lst
07/19/2006	09:41	PM	164,329,954	W57682434.lst
07/19/2006	09:42	PM	139,996,221	W57682436.lst
07/19/2006	09:43	PM	119,954,435	W57682438.lst
07/19/2006	09:43	PM	118,483,867	W57682440.lst
07/19/2006	09:44	PM	115,965,117	W57682442.lst
07/19/2006	09:45	PM	108,038,716	W57682444.lst
07/19/2006	09:45	PM	83,856,463	W57682446.lst
07/19/2006	09:46	PM	81,412,978	W57682448.lst
07/19/2006	09:46	PM	81,019,589	W57682450.lst
07/19/2006	09:47	PM	84,157,325	W57682452.lst
07/19/2006	09:47	PM	84,338,193	W57682454.lst
07/19/2006	09:48	PM	86,948,528	W57682456.lst
07/19/2006	09:49	PM	90,098,355	W57682458.lst
07/19/2006	09:49	PM	98,906,124	W57682460.lst
07/19/2006	09:50	PM	96,395,216	W57682462.lst
07/19/2006	09:50	PM	89,446,641	W57682464.lst
07/19/2006	09:51	PM	89,098,627	W57682466.lst
07/19/2006	09:51	PM	81,368,478	W57682468.lst
07/19/2006	09:52	PM	82,641,966	W57682470.lst
07/19/2006	09:52	PM	83,201,609	W57682472.lst
07/19/2006	09:53	PM	80,205,021	W57682474.lst
07/19/2006	09:54	PM	80,626,601	W57682476.lst
07/19/2006	09:54	PM	80,912,496	W57682478.lst
07/19/2006	09:55	PM	132,378,946	W57682480.lst
07/19/2006	09:56	PM	162,005,109	W57682482.lst
07/19/2006	09:57	PM	112,829,585	W57682484.lst
07/19/2006	09:57	PM	63,762,267	W57682486.lst
07/19/2006	09:57	PM	21,234,361	W57702424.lst
07/19/2006	09:58	PM	46,620,236	W57702426.lst
07/19/2006	09:58	PM	53,788,974	W57702428.lst
07/19/2006	09:58	PM	59,209,701	W57702430.lst
07/19/2006	09:59	PM	63,633,189	W57702432.lst
07/19/2006	09:59	PM	65,748,064	W57702434.lst
07/19/2006	10:00	PM	69,317,329	W57702436.lst
07/19/2006	10:00	PM	75,426,301	W57702438.lst
07/19/2006	10:01	PM	84,893,663	W57702440.lst
07/19/2006	10:01	PM	90,919,539	W57702442.lst

WAIMAKARIRI DISTRICT COUNCIL AND ENVIRONMENT CANTERBURY

07/19/2006	10:02	PM	129,840,864	W57702444.lst
07/19/2006	10:03	PM	111,642,361	W57702446.lst
07/19/2006	10:03	PM	87,643,983	W57702448.lst
07/19/2006	10:04	PM	84,561,741	W57702450.lst
07/19/2006	10:04	PM	84,039,759	W57702452.lst
07/19/2006	10:05	PM	83,701,064	W57702454.lst
07/19/2006	10:05	PM	85,663,917	W57702456.lst
07/19/2006	10:06	PM	84,228,505	W57702458.lst
07/19/2006	10:06	PM	84,648,706	W57702460.lst
07/19/2006	10:07	PM	86,372,805	W57702462.lst
07/19/2006	10:07	PM	89,240,991	W57702464.lst
07/19/2006	10:08	PM	86,310,734	W57702466.lst
07/19/2006	10:09	PM	87,211,843	W57702468.lst
07/19/2006	10:09	PM	88,274,360	W57702470.lst
07/19/2006	10:10	PM	83,141,696	W57702472.lst
07/19/2006	10:10	PM	80,455,118	W57702474.lst
07/19/2006	10:11	PM	78,205,156	W57702476.lst
07/19/2006	10:11	PM	75,263,757	W57702478.lst
07/19/2006	10:12	PM	115,823,004	W57702480.lst
07/19/2006	10:13	PM	156,894,563	W57702482.lst
07/19/2006	10:14	PM	135,922,622	W57702484.lst
07/19/2006	10:14	PM	65,950,578	W57702486.lst
07/19/2006	10:14	PM	6,389,668	W57702488.lst
07/19/2006	10:15	PM	29,138,683	W57722444.lst
07/19/2006	10:15	PM	82,064,860	W57722446.lst
07/19/2006	10:16	PM	83,741,455	W57722448.lst
07/19/2006	10:16	PM	83,959,149	W57722450.lst
07/19/2006	10:17	PM	84,619,425	W57722452.lst
07/19/2006	10:18	PM	84,950,955	W57722454.lst
07/19/2006	10:18	PM	85,653,857	W57722456.lst
07/19/2006	10:19	PM	84,611,352	W57722458.lst
07/19/2006	10:19	PM	84,385,892	W57722460.lst
07/19/2006	10:20	PM	81,366,247	W57722462.lst
07/19/2006	10:20	PM	80,115,467	W57722464.lst
07/19/2006	10:21	PM	79,949,846	W57722466.lst
07/19/2006	10:21	PM	85,060,203	W57722468.lst
07/19/2006	10:22	PM	84,855,974	W57722470.lst
07/19/2006	10:22	PM	84,679,281	W57722472.lst
07/19/2006	10:23	PM	88,010,965	W57722474.lst
07/19/2006	10:24	PM	85,290,396	W57722476.lst
07/19/2006	10:24	PM	82,554,281	W57722478.lst
07/19/2006	10:25	PM	107,235,720	W57722480.lst
07/19/2006	10:26	PM	162,594,332	W57722482.lst
07/19/2006	10:27	PM	131,235,850	W57722484.lst
07/19/2006	10:27	PM	85,982,792	W57722486.lst
07/19/2006	10:27	PM	30,305,692	W57722488.lst
07/19/2006	10:27	PM	36	W57742444.lst
07/19/2006	10:28	PM	41,036,524	W57742446.lst
07/19/2006	10:28	PM	81,837,013	W57742448.lst
07/19/2006	10:29	PM	83,702,647	W57742450.lst
07/19/2006	10:29	PM	82,486,545	W57742452.lst
07/19/2006	10:30	PM	82,149,594	W57742454.lst
07/19/2006	10:31	PM	86,167,871	W57742456.lst
07/19/2006	10:31	PM	85,647,173	W57742458.lst
07/19/2006	10:32	PM	87,163,888	W57742460.lst
07/19/2006	10:32	PM	87,349,023	W57742462.lst
07/19/2006	10:33	PM	86,538,216	W57742464.lst
07/19/2006	10:33	PM	83,852,892	W57742466.lst
07/19/2006	10:34	PM	83,984,511	W57742468.lst
07/19/2006	10:34	PM	82,609,316	W57742470.lst
07/19/2006	10:35	PM	83,907,237	W57742472.lst
07/19/2006	10:35	PM	83,043,822	W57742474.lst
07/19/2006	10:36	PM	85,890,186	W57742476.lst
07/19/2006	10:37	PM	84,732,484	W57742478.lst

WAIMAKARIRI DISTRICT COUNCIL AND ENVIRONMENT CANTERBURY

07/19/2006	10:37	PM	98,016,074	W57742480.lst
07/19/2006	10:38	PM	166,345,632	W57742482.lst
07/19/2006	10:39	PM	120,497,201	W57742484.lst
07/19/2006	10:40	PM	85,716,563	W57742486.lst
07/19/2006	10:40	PM	42,499,834	W57742488.lst
07/19/2006	10:40	PM	12,392,073	W57762448.lst
07/19/2006	10:40	PM	61,929,773	W57762450.lst
07/19/2006	10:41	PM	84,644,982	W57762452.lst
07/19/2006	10:41	PM	84,306,009	W57762454.lst
07/19/2006	10:42	PM	82,718,151	W57762456.lst
07/19/2006	10:42	PM	83,408,801	W57762458.lst
07/19/2006	10:43	PM	83,098,892	W57762460.lst
07/19/2006	10:43	PM	85,405,625	W57762462.lst
07/19/2006	10:44	PM	86,293,997	W57762464.lst
07/19/2006	10:45	PM	86,601,405	W57762466.lst
07/19/2006	10:45	PM	87,100,988	W57762468.lst
07/19/2006	10:46	PM	86,351,101	W57762470.lst
07/19/2006	10:46	PM	84,074,558	W57762472.lst
07/19/2006	10:47	PM	82,061,580	W57762474.lst
07/19/2006	10:47	PM	81,407,099	W57762476.lst
07/19/2006	10:48	PM	81,354,580	W57762478.lst
07/19/2006	10:48	PM	86,574,120	W57762480.lst
07/19/2006	10:49	PM	163,465,019	W57762482.lst
07/19/2006	10:50	PM	135,150,316	W57762484.lst
07/19/2006	10:51	PM	51,574,330	W57762486.lst
07/19/2006	10:51	PM	444,908	W57762488.lst
07/19/2006	10:51	PM	13,132	W57782450.lst
07/19/2006	10:51	PM	25,700,831	W57782452.lst
07/19/2006	10:51	PM	44,937,276	W57782454.lst
07/19/2006	10:51	PM	67,777,534	W57782456.lst
07/19/2006	10:52	PM	84,953,231	W57782458.lst
07/19/2006	10:52	PM	83,924,893	W57782460.lst
07/19/2006	10:53	PM	83,510,524	W57782462.lst
07/19/2006	10:53	PM	83,829,627	W57782464.lst
07/19/2006	10:54	PM	82,922,628	W57782466.lst
07/19/2006	10:55	PM	86,218,140	W57782468.lst
07/19/2006	10:55	PM	83,844,187	W57782470.lst
07/19/2006	10:55	PM	45,661,376	W57782472.lst
07/19/2006	10:56	PM	43,792,881	W57782474.lst
07/19/2006	10:56	PM	39,077,734	W57782476.lst
07/19/2006	10:56	PM	36,385,567	W57782478.lst
07/19/2006	10:56	PM	32,532,589	W57782480.lst
07/19/2006	10:57	PM	50,560,863	W57782482.lst
07/19/2006	10:57	PM	23,681,274	W57782484.lst
07/19/2006	10:57	PM	677,526	W57802456.lst
07/19/2006	10:57	PM	57,068,010	W57802458.lst
07/19/2006	10:58	PM	88,267,060	W57802460.lst
07/19/2006	10:58	PM	85,833,890	W57802462.lst
07/19/2006	10:59	PM	83,612,690	W57802464.lst
07/19/2006	10:59	PM	81,704,375	W57802466.lst
07/19/2006	11:00	PM	81,646,716	W57802468.lst
07/19/2006	11:00	PM	55,210,423	W57802470.lst
07/19/2006	11:00	PM	1,462,638	W57822458.lst
07/19/2006	11:00	PM	57,364,619	W57822460.lst
07/19/2006	11:01	PM	82,539,538	W57822462.lst
07/19/2006	11:01	PM	67,374,161	W57822464.lst
07/19/2006	11:02	PM	40,437,726	W57822466.lst
07/19/2006	11:02	PM	16,155,291	W57822468.lst
07/19/2006	11:02	PM	19,881	W57822470.lst
07/19/2006	11:02	PM	2,307,822	W57842460.lst
07/19/2006	11:02	PM	6,319,339	W57842462.lst